




 **Primary 5 Science (Term 2) - Red Swastika** 

Add Questions **Assign** **Settings** **Review**

 Duplicate  Print  Delete

 **Assign Test**

Test Introduction

[+ Add Introduction](#)

66 Questions (71 Points)

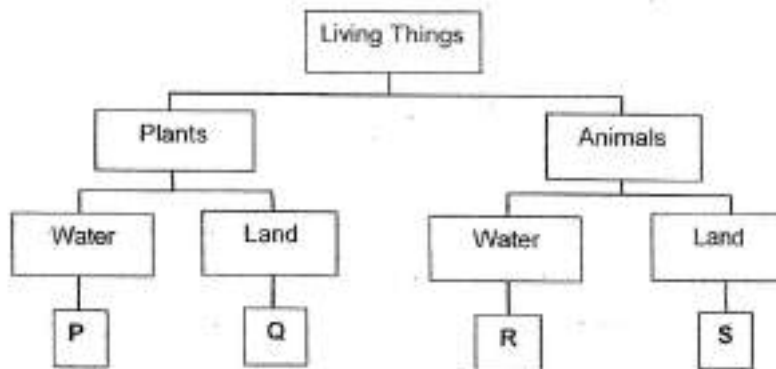
Question Bank: 9,275 Questions 

Test Questions **0 Test Assignments**

Question 1 Primary 5 Science » Primary 5 Science (Term 2) 2 pts

For each question, choose the most suitable answer below.
(28 x 2 marks)

Study the classification table below.



Which of the following is correct?

- A)

| | |
|---------------------------------|----------------------------------|
| Living things that live on land | Living things that live in water |
| Q only | R only |
- B)

| | |
|---------------------------------|----------------------------------|
| Living things that live on land | Living things that live in water |
| P and Q only | R and S only |
- ✓ C)

| | |
|---------------------------------|----------------------------------|
| Living things that live on land | Living things that live in water |
| Q and S only | P and R only |

| | | |
|----|--|---|
| D) | Living things that live on land | Living things that live in water |
| | Q and R only | P and S only |

Question Type: Multiple Choice
Randomize Answers: No
Date Added: Thu 5th Aug 2021
Last Modified: N/A
QID#: 28,628,229

[Answers](#) | [Edit](#) | [Duplicate](#) | [Used In](#) | [Reorder](#)

[Remove From Test](#)

Question 2

Primary 5 Science » Primary 5 Science (Term 2)

2 pts

The table below shows information about two animals, X and Y.

| Animals | Number of legs | | | Types of outer coverings | |
|---------|----------------|---|---|--------------------------|------|
| | 0 | 2 | 4 | feathers | hair |
| X | | ✓ | | ✓ | |
| Y | | ✓ | | | ✓ |

What method of reproduction do animals X and Y most likely have?

- A)

| | |
|------------|----------|
| Animal X | Animal Y |
| give birth | lay eggs |
- B)

| | |
|------------|------------|
| Animal X | Animal Y |
| give birth | give birth |
- ✓ C)

| | |
|----------|------------|
| Animal X | Animal Y |
| lay eggs | give birth |
- D)

| | |
|----------|----------|
| Animal X | Animal Y |
| lay eggs | lay eggs |

Question Type: Multiple Choice
Randomize Answers: No
Date Added: Thu 5th Aug 2021
Last Modified: N/A
QID#: 28,628,209

[Answers](#) | [Edit](#) | [Duplicate](#) | [Used In](#) | [Reorder](#)

[Remove From Test](#)

Question 3

Primary 5 Science » Primary 5 Science (Term 2)

2 pts

Three students made a statement each about the similarity in sexual reproduction between flowering plants and humans.

Allison: Pollination takes place before fertilisation in flowering plants and humans.

Benny: Both flowering plants and humans have female-reproductive cells.

Chris: Egg cells are transferred to the male reproductive parts in both the flowering plants and humans.

Which student(s) has/have made a correct statement?

- ✓ A) Benny only
- B) Chris only
- C) Allison and Benny only
- D) Benny and Chris only

Question Type: Multiple Choice
 Randomize Answers: No
 Date Added: Thu 5th Aug 2021
 Last Modified: N/A
 QID#: 28,628,210

[Answers](#) | [Edit](#) | [Duplicate](#) | [Used In](#) | [Reorder](#)

[Remove From Test](#)

Question 4

Primary 5 Science » Primary 5 Science (Term 2)

2 pts

The table shows the properties of four substances, P, Q, R and S.

| Substance | Is it magnetic? | Can it float on water? |
|-----------|-----------------|------------------------|
| P | no | no |
| Q | yes | no |
| R | no | no |
| S | yes | yes |

The substances are mixed together in a beaker. The following shows the steps Karen took to separate the substances.

- Step 1: Pour some water into the beaker.

Step 2: Place a magnet close to the mixture.

Which of the following is correct after Karen carried out the steps according to the sequence above?

- A)

| | |
|---------------------------------|------------------------------------|
| Substance that can be separated | Substance that cannot be separated |
| S only | P, Q, R |
- B)

| | |
|---------------------------------|------------------------------------|
| Substance that can be separated | Substance that cannot be separated |
| Q only | P, R, S |

C)

| Substance that can be separated | Substance that cannot be separated |
|---------------------------------|------------------------------------|
| P, R | Q, S |

✓ D)

| Substance that can be separated | Substance that cannot be separated |
|---------------------------------|------------------------------------|
| Q, S | P, R |

Question Type: Multiple Choice
Randomize Answers: No
Date Added: Thu 5th Aug 2021
Last Modified: N/A
QID#: 28,628,211

[Answers](#) | [Edit](#) | [Duplicate](#) | [Used In](#) | [Reorder](#)

[Remove From Test](#)

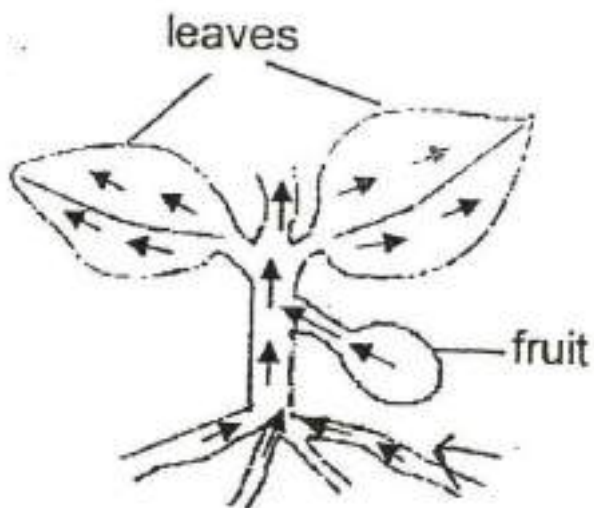
Question 5

Primary 5 Science » Primary 5 Science (Term 2)

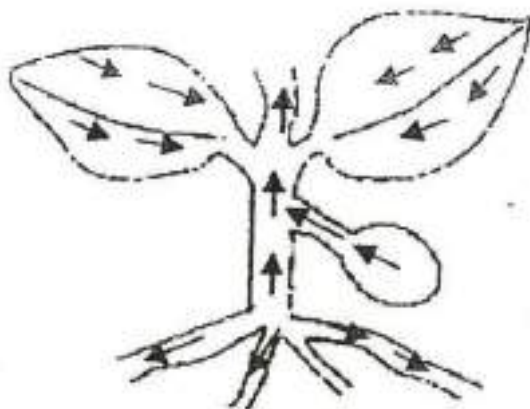
2 pts

Which of the following diagrams best shows the correct path taken by the food made by the leaves?

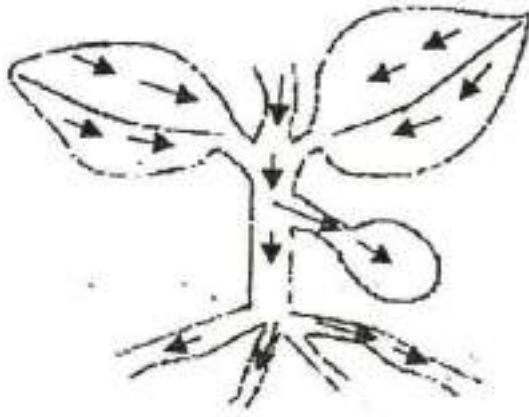
A)



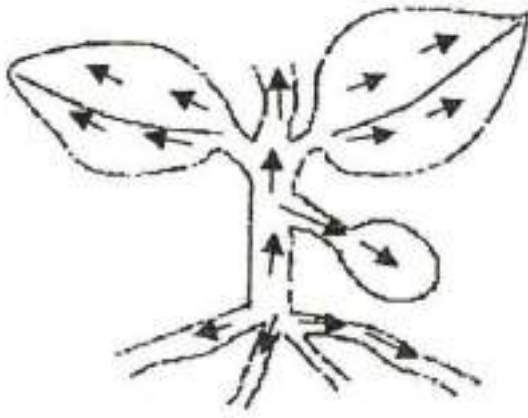
B)



✓ C)



D)



Question Type: Multiple Choice
Randomize Answers: No
Date Added: Thu 5th Aug 2021
Last Modified: N/A
QID#: 28,628,212

[Answers](#) | [Edit](#) | [Duplicate](#) | [Used In](#) | [Reorder](#)

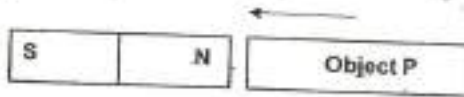
[Remove From Test](#)

Question 6

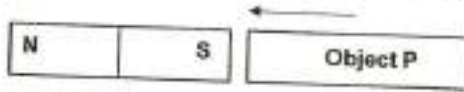
Primary 5 Science » Primary 5 Science (Term 2)

2 pts

Joe placed the North pole of a magnet near one end of object P as shown in the diagram.



He observed that object P moved towards the magnet. Next, he placed the South pole of the magnet near the same end of object P.



He observed that object P again moved towards the magnet. He repeated the experiment with two other objects, Q and R, and recorded his observations in the table below.

| Object | Movement of object when North pole of magnet was placed near the object | Movement of object when South pole of magnet was placed near the object |
|--------|---|---|
| P | moved towards magnet | moved towards magnet |
| Q | moved towards magnet | moved away from magnet |
| R | did not move | did not move |

Based on Joe's observations, which object(s) is/are made of magnetic material?

- A) P only
- B) R only
- C) Q and R only
- ✓ D) P and Q only

Question Type: Multiple Choice
 Randomize Answers: No
 Date Added: Thu 5th Aug 2021
 Last Modified: N/A
 QID#: 28,628,213

[Answers](#) |
 [Edit](#) |
 [Duplicate](#) |
 [Used In](#) |
 [Reorder](#)

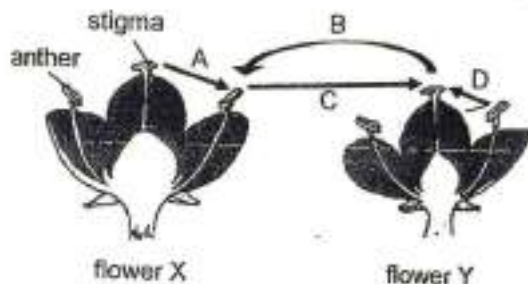
[Remove From Test](#)

Question 7

Primary 5 Science » Primary 5 Science (Term 2)

2 pts

The diagram below shows two flowers, X and Y, of the same type of plants.



Which of the arrows show(s) pollination taking place?

- A) B only
- B) A and B only
- ✓ C) C and D only
- D) A, C and D only

Question Type: Multiple Choice
Randomize Answers: No
Date Added: Thu 5th Aug 2021
Last Modified: N/A
QID#: 28,628,214

[Answers](#) |
 [Edit](#) |
 [Duplicate](#) |
 [Used In](#) |
 [Reorder](#)

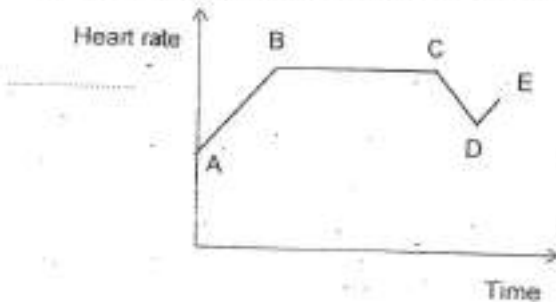
[Remove From Test](#)

Question 8

Primary 5 Science » Primary 5 Science (Term 2)

2 pts

Ho Meng wore a device that measured his heart rate as he ran during his athletic training. During the training, he took a rest for a while before he continued on his run. The graph below shows his heart rate that was recorded during his training.



At which part of the graph did Ho Meng take a rest?

- A) A to B
- B) B to C
- ✓ C) C to D
- D) D to E

Question Type: Multiple Choice
Randomize Answers: No
Date Added: Thu 5th Aug 2021
Last Modified: N/A
QID#: 28,628,215

[Answers](#) |
 [Edit](#) |
 [Duplicate](#) |
 [Used In](#) |
 [Reorder](#)

[Remove From Test](#)

Question 9

Primary 5 Science » Primary 5 Science (Term 2)

2 pts

Study the diagram below.



Which of the following statements are correct?

- A: P is formed from the ovary of a flower.
- B: Q is developed from many ovules in a flower.
- C: Q is dispersed by animals.

- A) A only
- ✓ B) A and C only
- C) B and C only
- D) A, B and C

Question Type: Multiple Choice
Randomize Answers: No
Date Added: Thu 5th Aug 2021
Last Modified: N/A
QID#: 28,628,216

[Answers](#) | [Edit](#) | [Duplicate](#) | [Used In](#) | [Reorder](#)

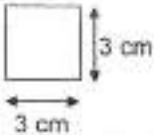
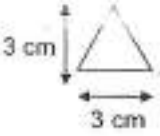

[Remove From Test](#)

Question 10

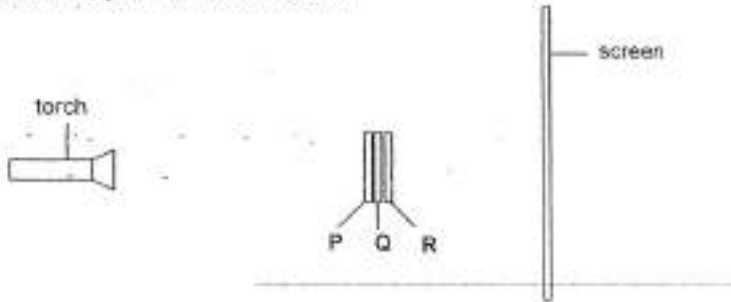
Primary 5 Science » Primary 5 Science (Term 2)

2 pts





The diagrams show three different objects and the materials they are made of.

| Object P | Object Q | Object R |
|---|---|---|
|  |  |  |
| tracing paper | cardboard | clear plastic |

Ali placed the three objects as shown below.



Which one of the following shadows will be cast on the screen when the torch is switched on?

- A) 
- B) 
- ✓ C) 
- D) 



Question Type: Multiple Choice
Randomize Answers: No
Date Added: Thu 5th Aug 2021
Last Modified: N/A
QID#: 28,628,217

[Answers](#) | [Edit](#) | [Duplicate](#) | [Used In](#) | [Reorder](#)

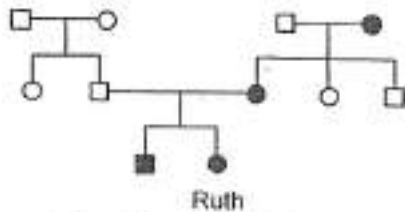
[Remove From Test](#)

Question 11

Primary 5 Science » Primary 5 Science (Term 2)

2 pts

Study the family tree of Ruth as shown.



Legend:

- male without dimples
- female without dimples
- male with dimples
- female with dimples

Which one of the statements below is correct?

- ✓ A) Ruth's uncle has no dimples.
- B) Ruth's grandfathers have dimples.
- C) One of Ruth's aunts has dimples.
- D) Ruth and her brother have no dimples.

Question Type: Multiple Choice
Randomize Answers: No
Date Added: Thu 5th Aug 2021
Last Modified: N/A
QID#: 28,628,218

[Answers](#) | [Edit](#) | [Duplicate](#) | [Used In](#) | [Reorder](#)

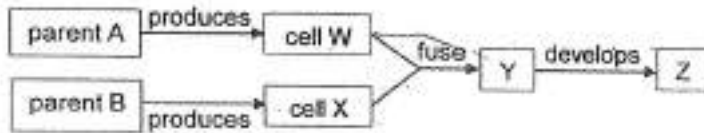
[Remove From Test](#)

Question 12

Primary 5 Science » Primary 5 Science (Term 2)

2 pts

The following diagram shows the human reproduction process.



Which of the following contain(s) the characteristics of both parent A and parent B?

- A) W only
- B) Z only
- C) X and Y only
- ✓ D) Y and Z only

Question Type: Multiple Choice
 Randomize Answers: No
 Date Added: Thu 5th Aug 2021
 Last Modified: N/A
 QID#: 28,628,219

[Answers](#) | [Edit](#) | [Duplicate](#) | [Used In](#) | [Reorder](#)

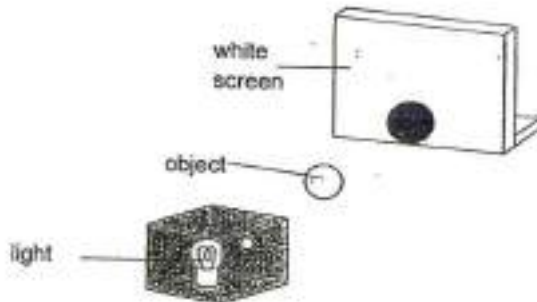
[Remove From Test](#)

Question 13

Primary 5 Science » Primary 5 Science (Term 2)

2 pts

When Joyce placed an object between the light source and the white screen, a shadow of the object was cast on the white screen as shown below.



Which of the following changes should Joyce make to the set-up such that she could observe a smaller shadow of the object?

- A: Use a brighter light source.
 - B: Move the screen nearer to the object.
 - C: Move the light source nearer to the object.
 - D: Move the light source further from the object.
- A) A and C only
 - ✓ B) B and D only
 - C) B and C only
 - D) A, B and D only

Question Type: Multiple Choice
Randomize Answers: No
Date Added: Thu 5th Aug 2021
Last Modified: N/A
QID#: 28,628,220

[Answers](#) | [Edit](#) | [Duplicate](#) | [Used In](#) | [Reorder](#)

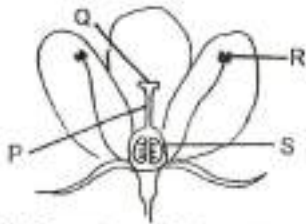
[Remove From Test](#)

Question 14

Primary 5 Science » Primary 5 Science (Term 2)

2 pts

The diagrams below show the parts of the reproductive system of a flowering plant and a human.



reproductive system of a flowering plant



a human reproductive system

Which of the following parts has a similar function as part X?

- A) P
- B) Q
- C) R
- ✓ D) S

Question Type: Multiple Choice
Randomize Answers: No
Date Added: Thu 5th Aug 2021
Last Modified: N/A
QID#: 28,628,221

[Answers](#) | [Edit](#) | [Duplicate](#) | [Used In](#) | [Reorder](#)

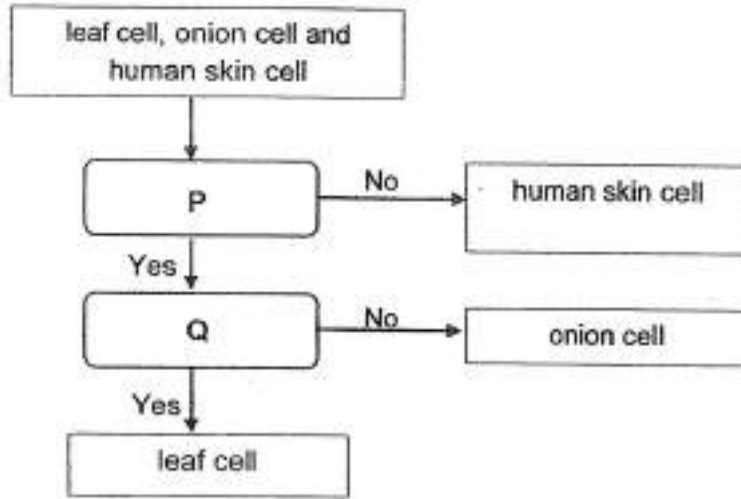
[Remove From Test](#)

Question 15

Primary 5 Science » Primary 5 Science (Term 2)

2 pts

Aye Leng classified three types of cells as shown below.



Which of the following are the likely questions for P and Q?

- A)

| | |
|---------------------------|-------------------------|
| P | Q |
| Does it have a cell wall? | Does it have a nucleus? |
- ✓ B)

| | |
|---------------------------|----------------------------|
| P | Q |
| Does it have a cell wall? | Does it have chloroplasts? |
- C)

| | |
|----------------------------|---------------------------|
| P | Q |
| Does it have chloroplasts? | Does it have a cell wall? |
- D)

| | |
|-------------------------------|-------------------------|
| P | Q |
| Does it have a cell membrane? | Does it have a nucleus? |

Question Type: Multiple Choice
Randomize Answers: No
Date Added: Thu 5th Aug 2021
Last Modified: N/A
QID#: 28,628,222

[Answers](#) | [Edit](#) | [Duplicate](#) | [Used In](#) | [Reorder](#)

[Remove From Test](#)

Question 16

Primary 5 Science » Primary 5 Science (Term 2)

2 pts

Daniel made a few statements about inhaled and exhaled air as shown below.

- A: Exhaled air is warmer than inhaled air.
- B: Exhaled air contains carbon dioxide only.
- ~~C: Inhaled air contains more water vapour than exhaled air.~~

Which of his statements is/are correct?

- ✓ A) A only

- B) A and B only
- C) A and C only
- D) B and C only

Question Type: Multiple Choice
Randomize Answers: No
Date Added: Thu 5th Aug 2021
Last Modified: N/A
QID#: 28,628,223

[Answers](#) | [Edit](#) | [Duplicate](#) | [Used In](#) | [Reorder](#)

[Remove From Test](#)

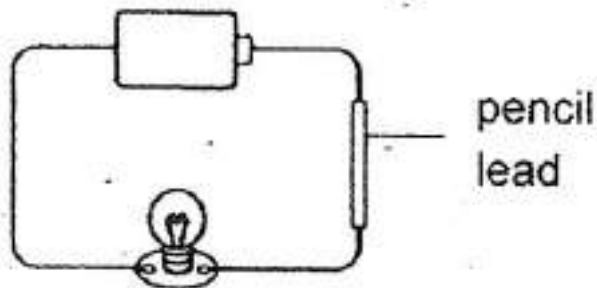
Question 17

Primary 5 Science » Primary 5 Science (Term 2)

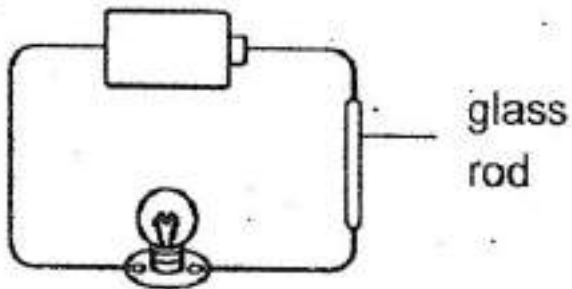
2 pts

Which one of the following bulbs will not light up?

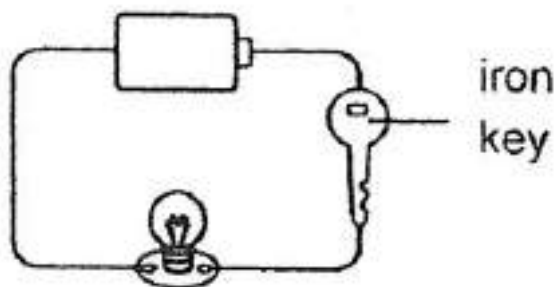
A)



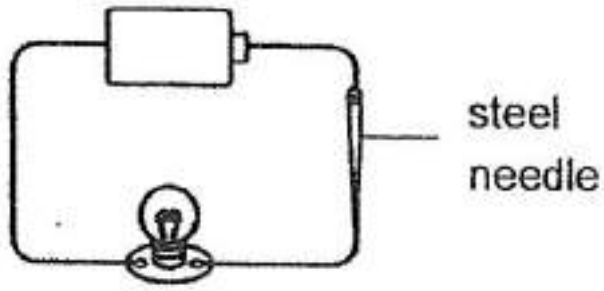
✓ B)



C)



D)



Question Type: Multiple Choice
Randomize Answers: No
Date Added: Thu 5th Aug 2021
Last Modified: N/A
QID#: 28,628,224

[Answers](#) | [Edit](#) | [Duplicate](#) | [Used In](#) | [Reorder](#)

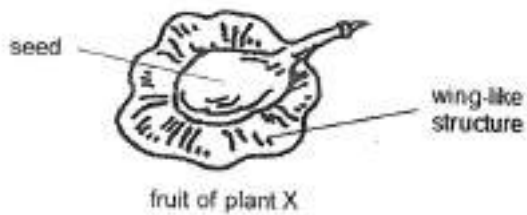
[Remove From Test](#)

Question 18

Primary 5 Science » Primary 5 Science (Term 2)

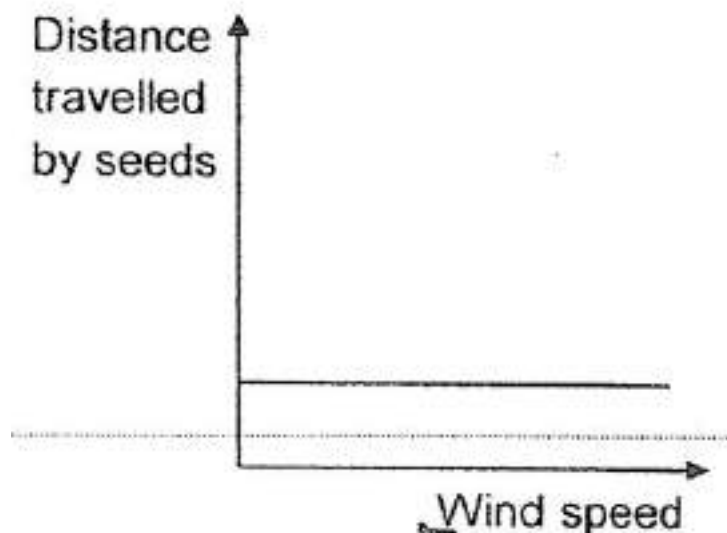
2 pts

The diagram below shows the fruit of plant X.

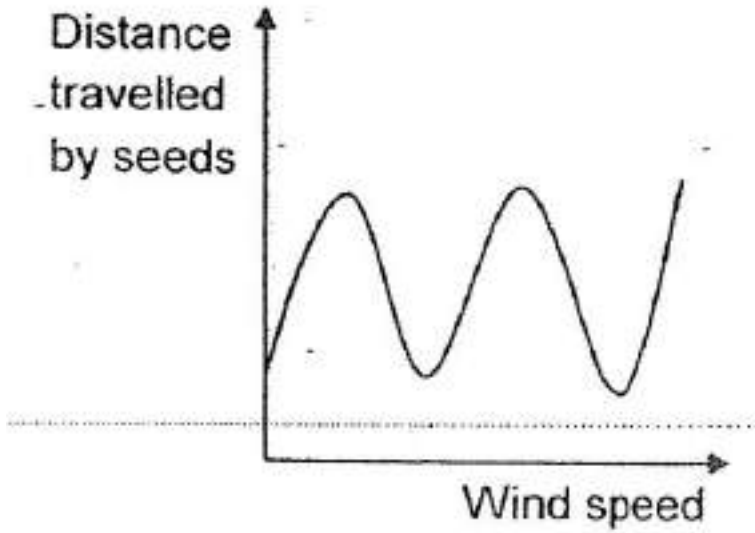


Which one of the following graphs would most likely show the relationship between the wind speed and the distance travelled by the seeds of plant X?

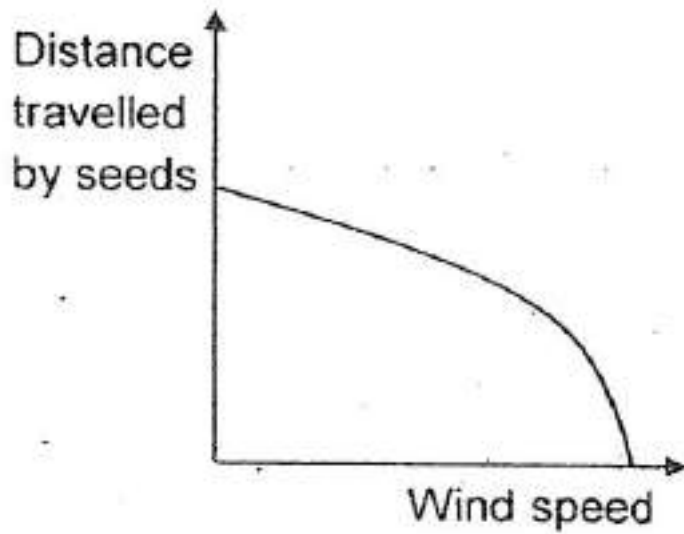
A)



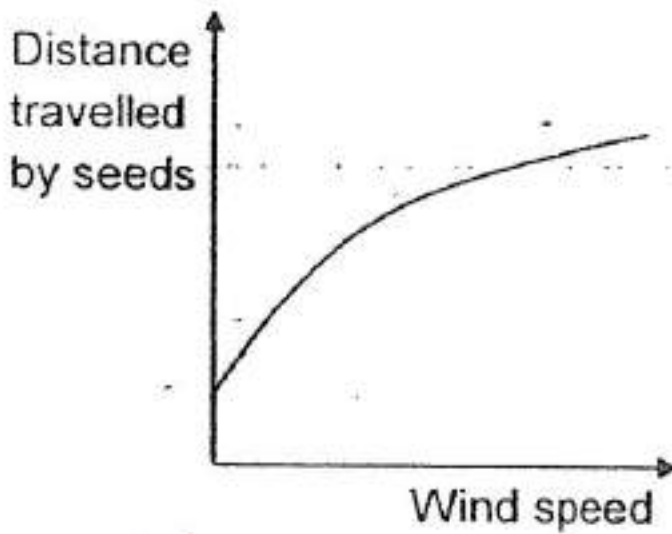
B)



C)



✓ D)



Question Type: Multiple Choice
Randomize Answers: No
Date Added: Thu 5th Aug 2021
Last Modified: N/A
QID#: 28,628,225

[Answers](#) |
 [Edit](#) |
 [Duplicate](#) |
 [Used In](#) |
 [Reorder](#)

[Remove From Test](#)

Question 19

Primary 5 Science » Primary 5 Science (Term 2)

2 pts

Material Y is used to cover electric wires as shown because it _____



- A) is cheap
- B) is cylindrical in shape
- C) can stretch very easily
- ✓ D) does not conduct electricity

Question Type: Multiple Choice
Randomize Answers: No
Date Added: Thu 5th Aug 2021
Last Modified: N/A
QID#: 28,628,226

[Answers](#) |
 [Edit](#) |
 [Duplicate](#) |
 [Used In](#) |
 [Reorder](#)

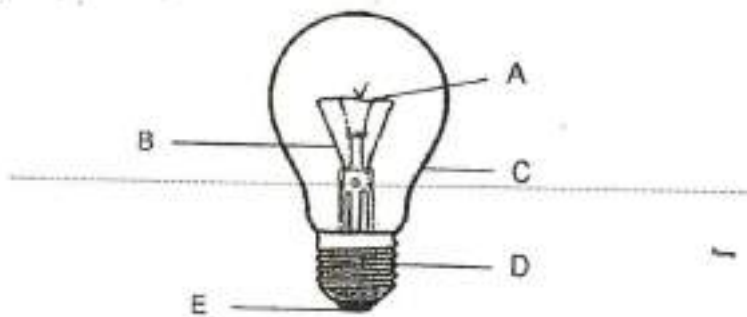
[Remove From Test](#)

Question 20

Primary 5 Science » Primary 5 Science (Term 2)

2 pts

The diagram below shows the parts of a bulb.



Which of the following best describe the parts of the bulb?

| | | |
|----|---------------------------|---------------------------|
| A) | Conductors of electricity | Insulators of electricity |
| | A, D, E | B, C |

- ✓ B)

| Conductors of electricity | Insulators of electricity |
|---------------------------|---------------------------|
| A, B, D, E | C |

- C)

| Conductors of electricity | Insulators of electricity |
|---------------------------|---------------------------|
| A, B, C | D, E |

- D)

| Conductors of electricity | Insulators of electricity |
|---------------------------|---------------------------|
| C, D, E | A, B |

Question Type: Multiple Choice
Randomize Answers: No
Date Added: Thu 5th Aug 2021
Last Modified: N/A
QID#: 28,628,227

[Answers](#) | [Edit](#) | [Duplicate](#) | [Used In](#) | [Reorder](#)

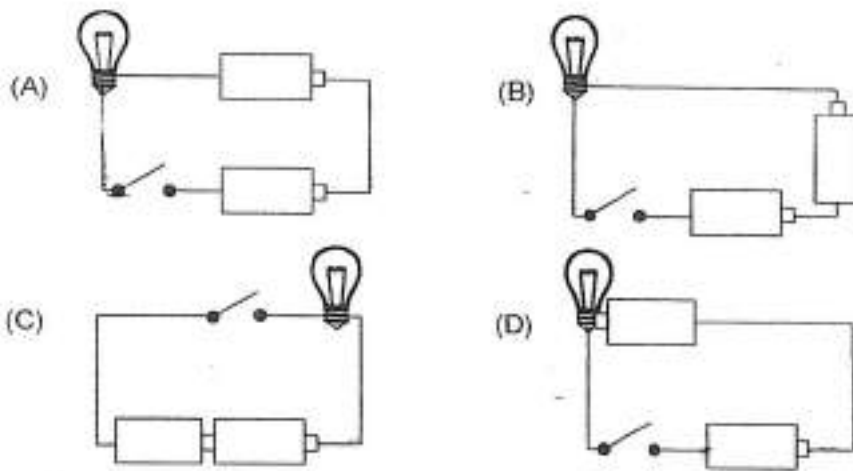
[Remove From Test](#)

Question 21

Primary 5 Science » Primary 5 Science (Term 2)

2 pts

Which of the following bulbs will light up when the switch is closed?



- A) A and B only
- B) B and C only
- ✓ C) B and D only
- D) A, B and D only

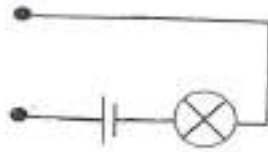
Question Type: Multiple Choice
Randomize Answers: No
Date Added: Thu 5th Aug 2021
Last Modified: N/A
QID#: 28,628,228

[Answers](#) | [Edit](#) | [Duplicate](#) | [Used In](#) | [Reorder](#)

[Remove From Test](#)

Question 22

John used a circuit tester to test a circuit card.

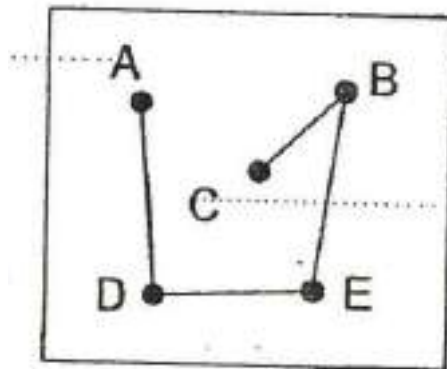


Two points were tested each time and the test results are shown in the table.

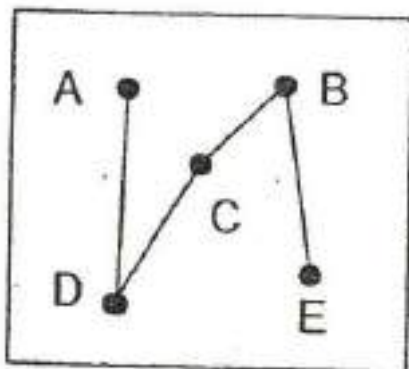
| Points at which tester is connected | Does the bulb in the circuit tester light up? |
|-------------------------------------|---|
| A and D | yes |
| A and C | no |
| B and D | no |
| B and E | yes |
| C and E | yes |

Which one of the following is a possible arrangement of the wires on the circuit card?

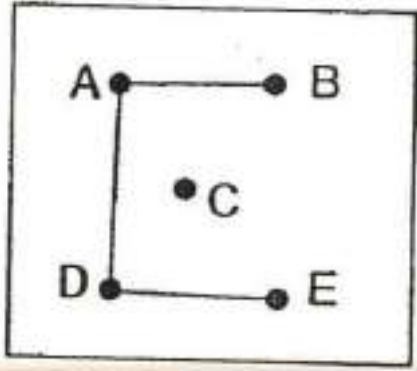
A)



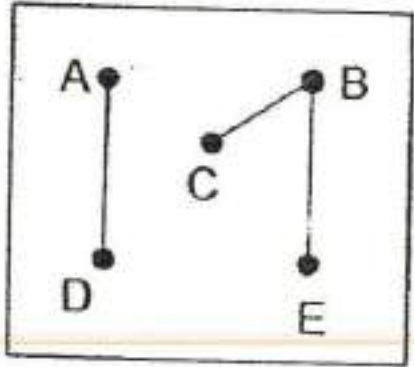
B)



C)



✓ D)



Question Type: Multiple Choice
Randomize Answers: No
Date Added: Thu 5th Aug 2021
Last Modified: N/A
QID#: 28,628,230

[Answers](#) | [Edit](#) | [Duplicate](#) | [Used In](#) | [Reorder](#)

[Remove From Test](#)

Question 23

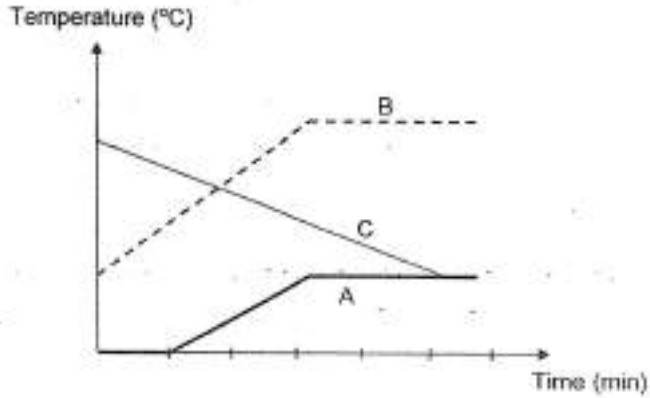
Primary 5 Science » Primary 5 Science (Term 2)

2 pts

Danny used three different set-ups, A, B and C, to carry out some investigations in the kitchen. The set-ups were as follows:

- Leaving a cup of ice cubes in the room
- Leaving a cup of hot water in the room
- Boiling a beaker of tap water in the room

He recorded the changes in temperature of the water in each set-up over a period of time and plotted the line graphs as shown below.



Based on the graphs, which of the following correctly describes the three set-ups?

- A)

| | | |
|--|--|---|
| Leaving a cup of ice cubes in the room | Leaving a cup of hot water in the room | Boiling a beaker of tap water in the room |
| C | B | A |
- B)

| | | |
|--|--|---|
| Leaving a cup of ice cubes in the room | Leaving a cup of hot water in the room | Boiling a beaker of tap water in the room |
| A | B | C |
- ✓ C)

| | | |
|--|--|---|
| Leaving a cup of ice cubes in the room | Leaving a cup of hot water in the room | Boiling a beaker of tap water in the room |
| A | C | B |
- D)

| | | |
|--|--|---|
| Leaving a cup of ice cubes in the room | Leaving a cup of hot water in the room | Boiling a beaker of tap water in the room |
| B | C | A |

Question Type: Multiple Choice
 Randomize Answers: No
 Date Added: Thu 5th Aug 2021
 Last Modified: N/A
 QID#: 28,628,231

Answers | Edit | Duplicate | Used In | Reorder

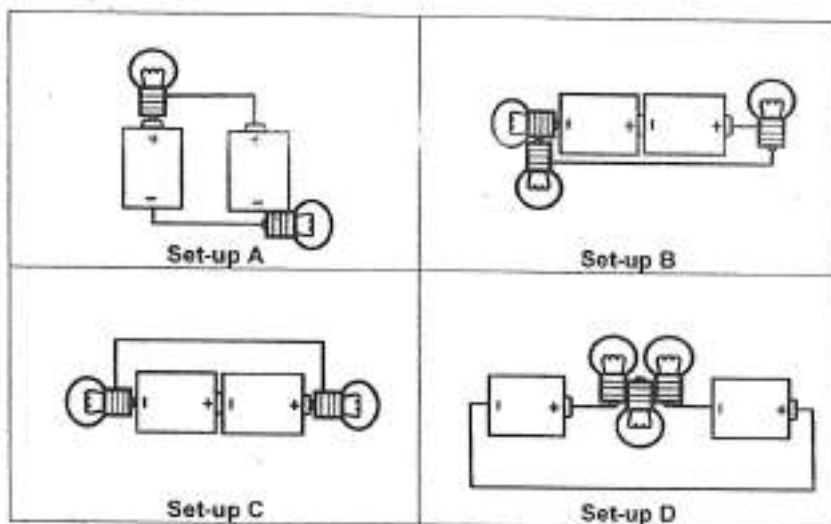
Remove From Test

Question 24

Primary 5 Science » Primary 5 Science (Term 2)

2 pts

Study the set-ups shown. The batteries and bulbs used are identical and in working condition.



In which of the set-ups will all the bulbs light up?

- ✓ A) B and C only
 B) A, B and C only
 C) B, C and D only
 D) A, B, C and D

Question Type: Multiple Choice
Randomize Answers: No
Date Added: Thu 5th Aug 2021
Last Modified: N/A
QID#: 28,628,232

[Answers](#) | [Edit](#) | [Duplicate](#) | [Used In](#) | [Reorder](#)

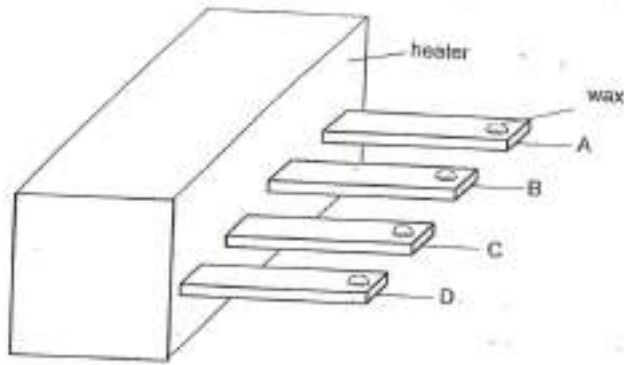
[Remove From Test](#)

Question 25

Primary 5 Science » Primary 5 Science (Term 2)

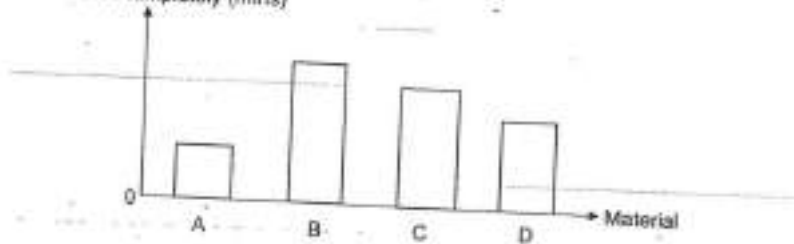
2 pts

Devi placed an equal amount of wax at the ends of four different materials, A, B, C and D, as shown.



The time taken for each piece of wax to melt completely is shown in the graph.

Time taken for the wax to melt completely (mins)



Based on the results, which of the following shows the correct arrangement of the materials from the best to the poorest conductor of heat?

- ✓ A)

| | |
|------------------------|---------------------------|
| Best conductor of heat | Poorest conductor of heat |
| A | D C B |
- B)

| | |
|------------------------|---------------------------|
| Best conductor of heat | Poorest conductor of heat |
| B | C D A |
- C)

| | |
|------------------------|---------------------------|
| Best conductor of heat | Poorest conductor of heat |
| A | C D B |
- D)

| | |
|------------------------|---------------------------|
| Best conductor of heat | Poorest conductor of heat |
| B | A C D |

Question Type: Multiple Choice
 Randomize Answers: No
 Date Added: Thu 5th Aug 2021
 Last Modified: N/A
 QID#: 28,628,234

[Answers](#) |
 [Edit](#) |
 [Duplicate](#) |
 [Used In](#) |
 [Reorder](#)

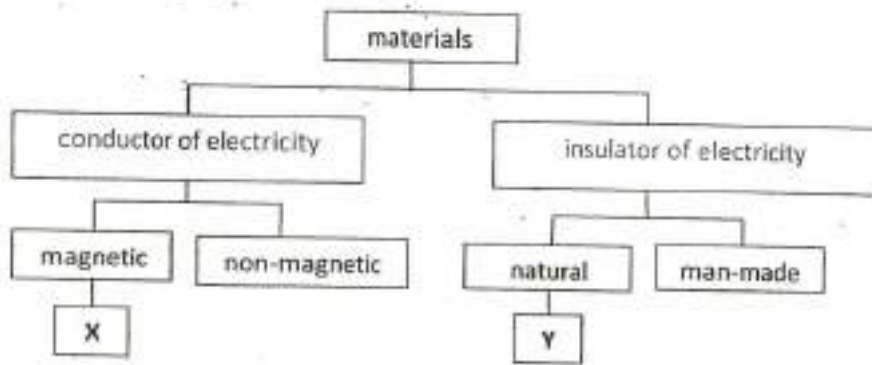
[Remove From Test](#)

Question 26

Primary 5 Science » Primary 5 Science (Term 2)

2 pts

The classification chart below shows how some materials are grouped.



Which of the following best represents materials X and Y?

- ✓ A)

| Material X | Material Y |
|------------|------------|
| iron | wood |
- B)

| Material X | Material Y |
|------------|------------|
| copper | rubber |
- C)

| Material X | Material Y |
|------------|------------|
| steel | plastic |
- D)

| Material X | Material Y |
|------------|------------|
| aluminium | cotton |

Question Type: Multiple Choice
Randomize Answers: No
Date Added: Thu 5th Aug 2021
Last Modified: N/A
QID#: 28,628,236

[Answers](#) | [Edit](#) | [Duplicate](#) | [Used In](#) | [Reorder](#)

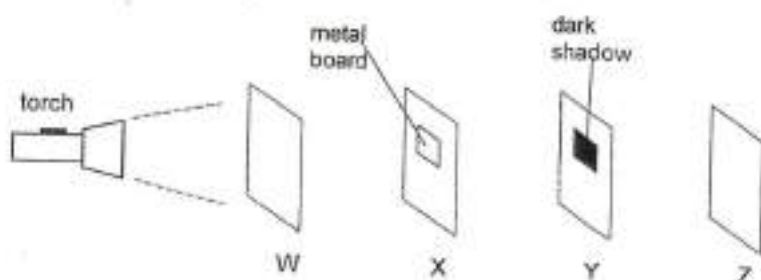
[Remove From Test](#)

Question 27

Primary 5 Science » Primary 5 Science (Term 2)

0.5 pts

Zhi Lun arranged sheets, W, X, Y and Z, in a straight line in a dark room as shown in the diagram below. He pasted a metal board on sheet X.



When he switched on the torch, a dark shadow was formed on sheet Y. Based on the experiment, choose accordingly to show if the statement below is true, falls or not possible to tell.

Z allows light to pass through.

- A) TRUE
 B) FALSE
 ✓ C) Not possible to tell

Question Type: Multiple Choice
Randomize Answers: No
Date Added: Thu 5th Aug 2021
Last Modified: N/A
QID#: 28,628,237

[Answers](#) | [Edit](#) | [Duplicate](#) | [Used In](#) | [Reorder](#)

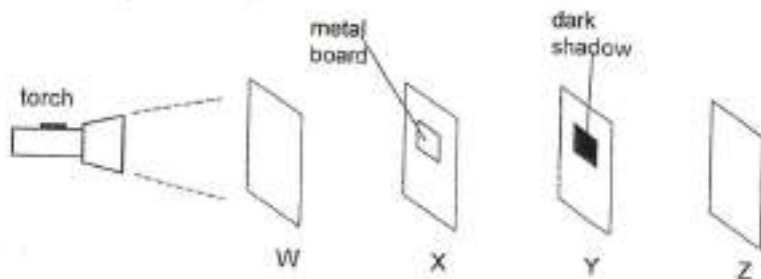
[Remove From Test](#)

Question 28

Primary 5 Science » Primary 5 Science (Term 2)

0.5 pts

Zhi Lun arranged sheets, W, X, Y and Z, in a straight line in a dark room as shown in the diagram below. He pasted a metal board on sheet X.



When he switched on the torch, a dark shadow was formed on sheet Y. Based on the experiment, choose accordingly to show if the statement below is true, falls or not possible to tell.

W and X allows light to pass through.

- ✓ A) TRUE
 B) FALSE
 C) Not possible to tell

Question Type: Multiple Choice
Randomize Answers: No
Date Added: Thu 5th Aug 2021
Last Modified: N/A
QID#: 28,628,233

[Answers](#) | [Edit](#) | [Duplicate](#) | [Used In](#) | [Reorder](#)

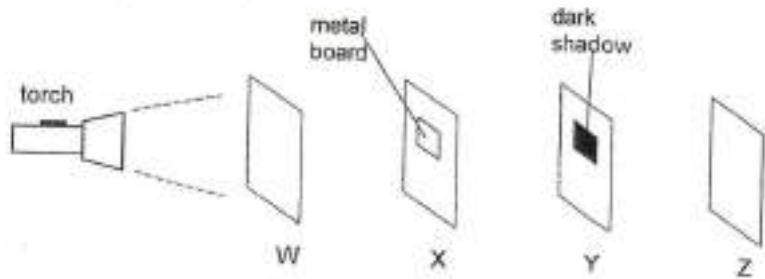
[Remove From Test](#)

Question 29

Primary 5 Science » Primary 5 Science (Term 2)

0.5 pts

Zhi Lun arranged sheets, W, X, Y and Z, in a straight line in a dark room as shown in the diagram below. He pasted a metal board on sheet X.



When he switched on the torch, a dark shadow was formed on sheet Y. Based on the experiment, choose accordingly to show if the statement below is true, falls or not possible to tell.

Y does not allow light to pass through.

- A) TRUE
- B) FALSE
- C) Not possible to tell

Question Type: Multiple Choice
Randomize Answers: No
Date Added: Thu 5th Aug 2021
Last Modified: N/A
QID#: 28,628,235

[Answers](#) | [Edit](#) | [Duplicate](#) | [Used In](#) | [Reorder](#)

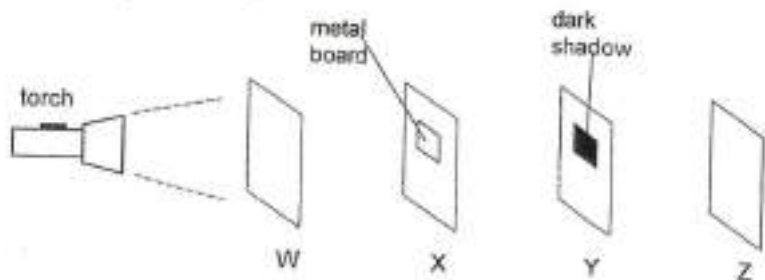
[Remove From Test](#)

Question 30

Primary 5 Science » Primary 5 Science (Term 2)

0.5 pts

Zhi Lun arranged sheets, W, X, Y and Z, in a straight line in a dark room as shown in the diagram below. He pasted a metal board on sheet X.



When he switched on the torch, a dark shadow was formed on sheet Y. Based on the experiment, choose accordingly to show if the statement below is true, falls or not possible to tell.

If the metal board is pasted on Y, a dark shadow will form on Z.

- A) TRUE
- B) FALSE
- C) Not possible to tell

Question Type: Multiple Choice
 Randomize Answers: No
 Date Added: Thu 5th Aug 2021
 Last Modified: N/A
 QID#: 28,628,238

[Answers](#) | [Edit](#) | [Duplicate](#) | [Used In](#) | [Reorder](#)

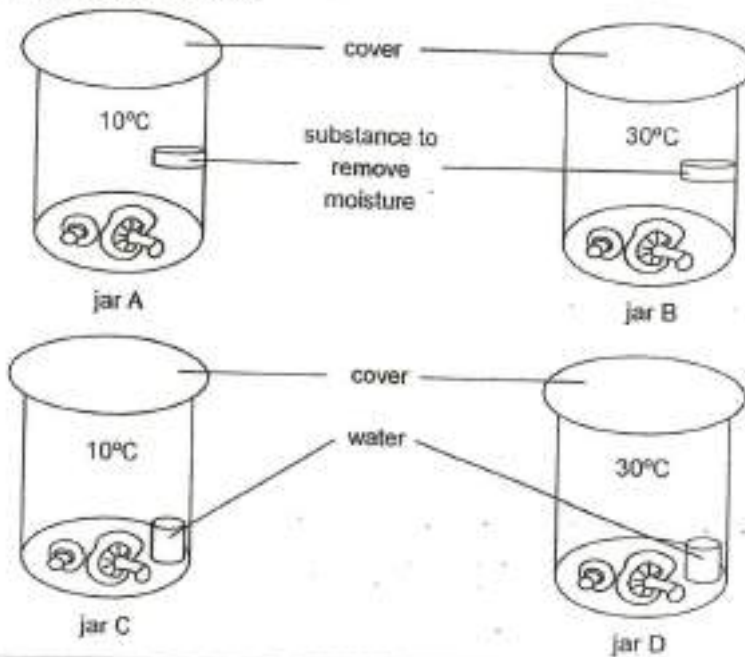
[Remove From Test](#)

Question 31

Primary 5 Science » Primary 5 Science (Term 2)

2 pts

Jasmine conducted an experiment to find out how to keep mushrooms fresh for a longer time. The mushrooms were put in identical jars but kept under different conditions as shown below.



After two weeks, Jasmine noticed that the mushrooms in jar D had become mouldy. Which two conditions have caused the mushrooms to become mouldy?

- A)

| Condition 1 | Condition 2 |
|-------------|-------------|
| warm | dry |
- ✓ B)

| Condition 1 | Condition 2 |
|-------------|-------------|
| warm | moist |
- C)

| Condition 1 | Condition 2 |
|-------------|-------------|
| cold | dry |
- D)

| Condition 1 | Condition 2 |
|-------------|-------------|
| cold | moist |

Question Type: Multiple Choice
 Randomize Answers: No
 Date Added: Thu 5th Aug 2021
 Last Modified: N/A
 QID#: 28,628,239

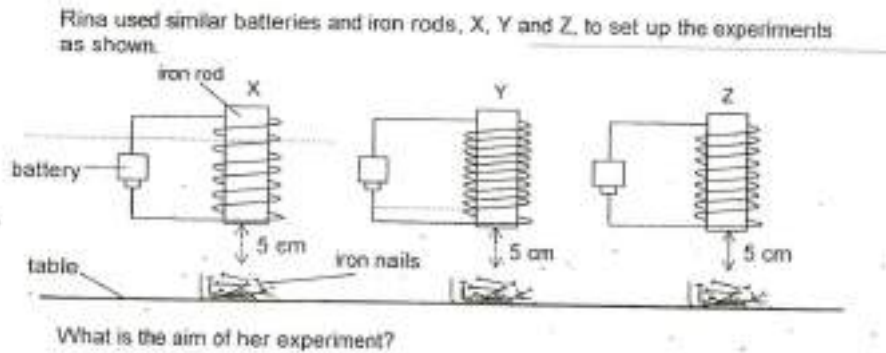
[Answers](#) |
 [Edit](#) |
 [Duplicate](#) |
 [Used In](#) |
 [Reorder](#)

[Remove From Test](#)

Question 32

Primary 5 Science » Primary 5 Science (Term 2)

2 pts



- A) To find out if the iron nails affect the magnetic strength of the electromagnet.
- B) To find out if distance of the nails from the rods affects the magnetic strength of the electromagnet.
- ✓ C) To find out if the number of wire coils around the rod affects the magnetic strength of the electromagnet.
- D) To find out if the material of the rod affects the magnetic strength of the electromagnet.

Question Type: Multiple Choice
Randomize Answers: No
Date Added: Thu 5th Aug 2021
Last Modified: N/A
QID#: 28,628,240

[Answers](#) |
 [Edit](#) |
 [Duplicate](#) |
 [Used In](#) |
 [Reorder](#)

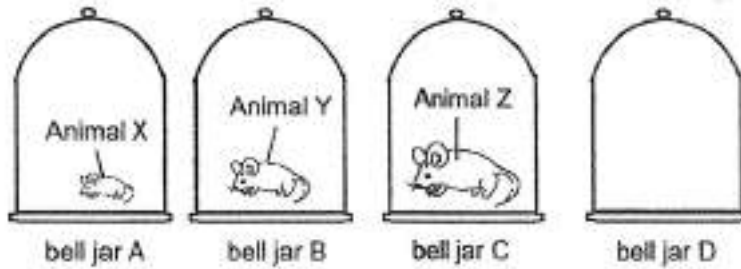
[Remove From Test](#)

Question 33

Primary 5 Science » Primary 5 Science (Term 2)

0 pts

Roger wanted to find out if the mass of an animal affects the amount of carbon dioxide it exhales. He placed animals, X, Y and Z, into identical bell jars, A, B and C, respectively. No animal was placed in bell jar D. He placed all the bell jars in a room with constant temperature.



The table below shows the amount of carbon dioxide in the bell jar at the end of the experiment.

| bell jar | animal | mass of animal (grams) | amount of carbon dioxide in bell jar at the end of experiment (units) |
|----------|--------|------------------------|---|
| A | X | 100 | 10 |
| B | Y | 170 | 18 |
| C | Z | 300 | 30 |
| D | - | - | 2 |

Based on the results in the table, state the relationship between the mass of an animal and the amount of carbon dioxide it exhales. (1 mark)

This question is designed for extended answers that parent/ teacher will have to assign and guide child to attempt after the test has been completed.

Grading: This question type is not graded on this system and will not affect the final score as it was designed in such a way that it requires manual assistance.

Question Type: Essay
 Date Added: Thu 5th Aug 2021
 Last Modified: N/A
 QID#: 28,628,248

Correctly answered feedback

As the mass of an animal increases, the amount of carbon dioxide it exhales also increases.

Incorrectly answered feedback

As the mass of an animal increases, the amount of carbon dioxide it exhales also increases.

[Answers](#) | [Edit](#) | [Duplicate](#) | [Used In](#) | [Reorder](#)

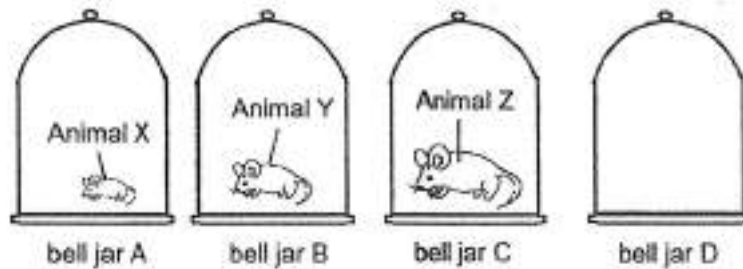
[Remove From Test](#)

Question 34

Primary 5 Science » Primary 5 Science (Term 2)

0 pts

Roger wanted to find out if the mass of an animal affects the amount of carbon dioxide it exhales. He placed animals, X, Y and Z, into identical bell jars, A, B and C, respectively. No animal was placed in bell jar D. He placed all the bell jars in a room with constant temperature.



The table below shows the amount of carbon dioxide in the bell jar at the end of the experiment.

| bell jar | animal | mass of animal (grams) | amount of carbon dioxide in bell jar at the end of experiment (units) |
|----------|--------|------------------------|---|
| A | X | 100 | 10 |
| B | Y | 170 | 18 |
| C | Z | 300 | 30 |
| D | - | - | 2 |

Identify the purpose of bell jar D in the experiment. (1 mark)

This question is designed for extended answers that parent/ teacher will have to assign and guide child to attempt after the test has been completed.

Grading: This question type is not graded on this system and will not affect the final score as it was designed in such a way that it requires manual assistance.

Question Type: Essay
 Date Added: Thu 5th Aug 2021
 Last Modified: N/A
 QID#: 28,628,249

Correctly answered feedback

Bell jar D is the control set-up (for the experiment).

Incorrectly answered feedback

Bell jar D is the control set-up (for the experiment).

[Answers](#) | [Edit](#) | [Duplicate](#) | [Used In](#) | [Reorder](#)

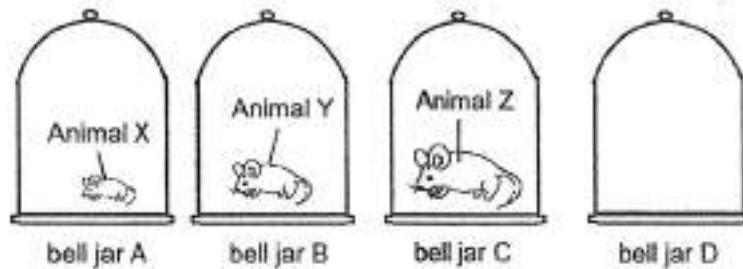
[Remove From Test](#)

Question 35

Primary 5 Science » Primary 5 Science (Term 2)

2 pts

Roger wanted to find out if the mass of an animal affects the amount of carbon dioxide it exhales. He placed animals, X, Y and Z, into identical bell jars, A, B and C, respectively. No animal was placed in bell jar D. He placed all the bell jars in a room with constant temperature.



Which variable(s) should Roger keep constant in order to conduct a fair test?
Choose the correct answer(s) below.

- A) Mass of the animal
- ✓ B) Size of the bell jar
- ✓ C) Amount of air in the bell jar at start of experiment
- ✓ D) Composition of air in the bell jar at start of experiment
- ✓ E) Amount of time the animal is kept in the bell jar

Question Type: Multiple Response
Randomize Answers: No
Grade style: Full points if all answers are correct
Date Added: Thu 5th Aug 2021
Last Modified: N/A
QID#: 28,628,279

[Answers](#) | [Edit](#) | [Duplicate](#) | [Used In](#) | [Reorder](#)

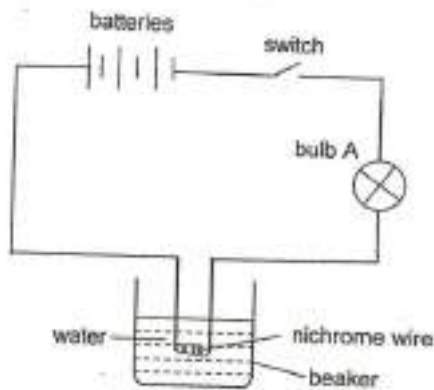
[Remove From Test](#)

Question 36

Primary 5 Science » Primary 5 Science (Term 2)

0 pts

Rahim set up the experiment as shown. He wanted to find out how the number of batteries used affected the temperature of the water and the brightness of the bulb. When he closed the switch, the nichrome wire heated up and the temperature of the water in the beaker increased.



He recorded the following results when different number of batteries were used.

| Number of batteries used | Temperature of the water (°C) | Brightness of the bulb (lux) |
|--------------------------|-------------------------------|------------------------------|
| 0 | 30 | 0 |
| 2 | 32 | 50 |
| 3 | 34 | 55 |
| 4 | 37 | 62 |

To conduct a fair test, identify two variables that should be kept the same in the above experiment. (2 marks)

Variable 1: _____

Variable 2: _____

This question is designed for extended answers that parent/ teacher will have to assign and guide child to attempt after the test has been completed.

Grading: This question type is not graded on this system and will not affect the final score as it was designed in such a way that it requires manual assistance.

Question Type: Essay
Date Added: Thu 5th Aug 2021
Last Modified: N/A
QID#: 28,628,251

Correctly answered feedback

Variable 1: The type of batteries.

Variable 2: The amount of water.

Incorrectly answered feedback

Variable 1: The type of batteries.

Variable 2: The amount of water.

[Answers](#) | [Edit](#) | [Duplicate](#) | [Used In](#) | [Reorder](#)

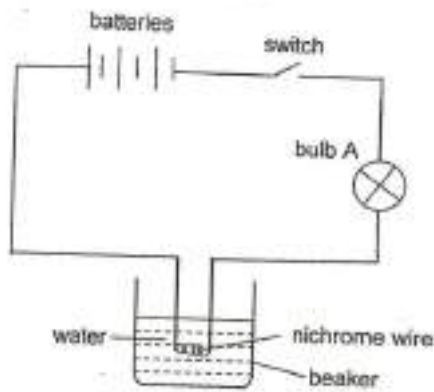
[Remove From Test](#)

Question 37

Primary 5 Science » Primary 5 Science (Term 2)

0 pts

Rahim set up the experiment as shown. He wanted to find out how the number of batteries used affected the temperature of the water and the brightness of the bulb. When he closed the switch, the nichrome wire heated up and the temperature of the water in the beaker increased.



He recorded the following results when different number of batteries were used.

| Number of batteries used | Temperature of the water (°C) | Brightness of the bulb (lux) |
|--------------------------|-------------------------------|------------------------------|
| 0 | 30 | 0 |
| 2 | 32 | 50 |
| 3 | 34 | 55 |
| 4 | 37 | 62 |

Based on the table, what effect did the number of batteries used have on the temperature of the water? (1 mark)

This question is designed for extended answers that parent/ teacher will have to assign and guide child to attempt after the test has been completed.

Grading: This question type is not graded on this system and will not affect the final score as it was designed in such a way that it requires manual assistance.

Question Type: Essay
Date Added: Thu 5th Aug 2021
Last Modified: N/A
QID#: 28,628,265

Correctly answered feedback

The more the number of batteries used, the higher the temperature of then water.

Incorrectly answered feedback

The more the number of batteries used, the higher the temperature of then water.

[Answers](#) | [Edit](#) | [Duplicate](#) | [Used In](#) | [Reorder](#)

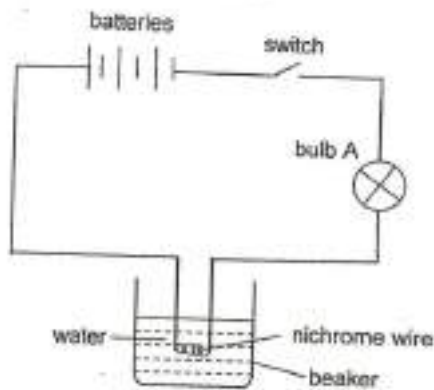
[Remove From Test](#)

Question 38

Primary 5 Science » Primary 5 Science (Term 2)

0 pts

Rahim set up the experiment as shown. He wanted to find out how the number of batteries used affected the temperature of the water and the brightness of the bulb. When he closed the switch, the nichrome wire heated up and the temperature of the water in the beaker increased.



He recorded the following results when different number of batteries were used.

| Number of batteries used | Temperature of the water (°C) | Brightness of the bulb (lux) |
|--------------------------|-------------------------------|------------------------------|
| 0 | 30 | 0 |
| 2 | 32 | 50 |
| 3 | 34 | 55 |
| 4 | 37 | 62 |

When Rahim connected six batteries to the circuit, he observed that the temperature of the water remained at 30°C and the bulb did not light up. Suggest what happened to the bulb. (1 mark)

This question is designed for extended answers that parent/ teacher will have to assign and guide child to attempt after the test has been completed.

Grading: This question type is not graded on this system and will not affect the final score as it was designed in such a way that it requires manual assistance.

Question Type: Essay
Date Added: Thu 5th Aug 2021
Last Modified: N/A
QID#: 28,628,253

Correctly answered feedback

The filament was burnt.

Incorrectly answered feedback

The filament was burnt.

[Answers](#) | [Edit](#) | [Duplicate](#) | [Used In](#) | [Reorder](#)

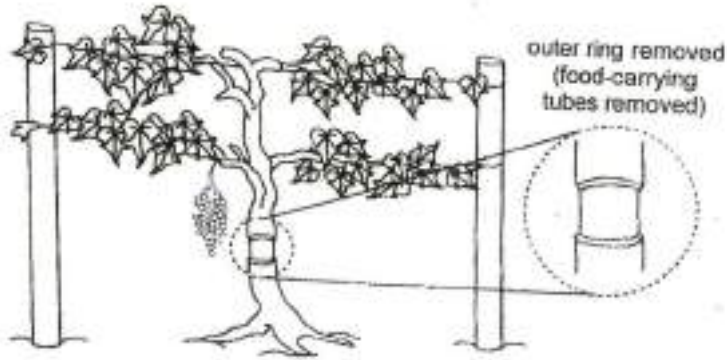
[Remove From Test](#)

Question 39

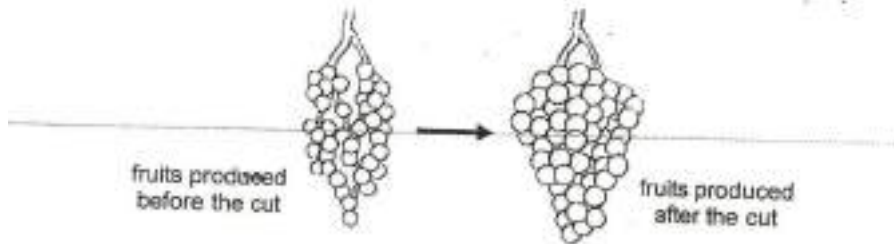
Primary 5 Science » Primary 5 Science (Term 2)

0 pts

George had a plant in his garden. He wanted the plant to produce bigger fruits, so he removed an outer ring from the stem of the plant as shown below. The food-carrying tubes were removed while the water-carrying tubes remained in the stem.



After some time, the plant produced bigger fruits than before.



Explain why the removal of an outer ring from the stem caused the plant to produce bigger fruits? (2 marks)

This question is designed for extended answers that parent/ teacher will have to assign and guide child to attempt after the test has been completed.

Grading: This question type is not graded on this system and will not affect the final score as it was designed in such a way that it requires manual assistance.

Question Type: Essay
Date Added: Thu 5th Aug 2021
Last Modified: N/A
QID#: 28,628,252

Correctly answered feedback

As the food-carrying tubes have been removed, food made by the leaves could not be transported to the parts below the cut stem. More food was transported to the fruits and stored there.

Incorrectly answered feedback

As the food-carrying tubes have been removed, food made by the leaves could not be transported to the parts below the cut stem. More food was transported to the fruits and stored there.

[Answers](#) | [Edit](#) | [Duplicate](#) | [Used In](#) | [Reorder](#)

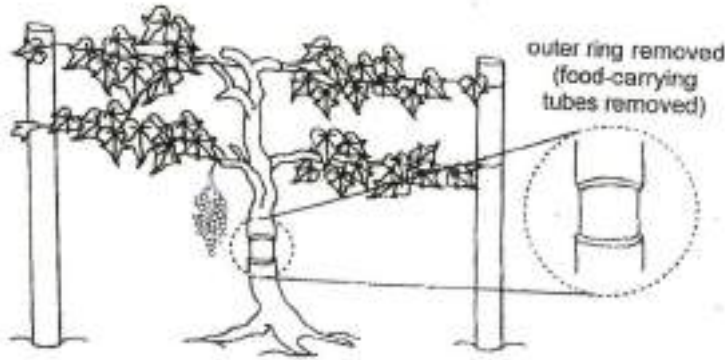
[Remove From Test](#)

Question 40

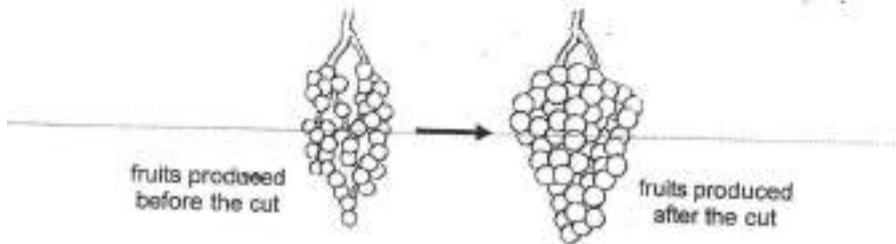
Primary 5 Science » Primary 5 Science (Term 2)

0 pts

George had a plant in his garden. He wanted the plant to produce bigger fruits, so he removed an outer ring from the stem of the plant as shown below. The food-carrying tubes were removed while the water-carrying tubes remained in the stem.



After some time, the plant produced bigger fruits than before.



However, several months later, the plant died. Suggest why the plant died several months after the removal of the outer ring of the stem. (2 marks)

This question is designed for extended answers that parent/ teacher will have to assign and guide child to attempt after the test has been completed.

Grading: This question type is not graded on this system and will not affect the final score as it was designed in such a way that it requires manual assistance.

Question Type: Essay
Date Added: Thu 5th Aug 2021
Last Modified: N/A
QID#: 28,628,255

Correctly answered feedback

Food could not be transported to the roots of the plant, so the roots died and could not absorb water for the plant.

Incorrectly answered feedback

Food could not be transported to the roots of the plant, so the roots died and could not absorb water for the plant.

[Answers](#) | [Edit](#) | [Duplicate](#) | [Used In](#) | [Reorder](#)

[Remove From Test](#)

Question 41

Primary 5 Science » Primary 5 Science (Term 2)

0 pts

For the human body, describe how the respiratory system and the circulatory system work together for oxygen in the atmospheric air to reach the legs. (2 marks)

This question is designed for extended answers that parent/ teacher will have to assign and guide child to attempt after the test has been completed.

Grading: This question type is not graded on this system and will not affect the final score as it was designed in such a way that it requires manual assistance.

Question Type: Essay
Date Added: Thu 5th Aug 2021
Last Modified: N/A
QID#: 28,628,254

Correctly answered feedback

Our nose breathes in air which enters our lungs.
 Our lungs absorb the oxygen into the blood and the blood transports the oxygen to the legs.

Incorrectly answered feedback

Our nose breathes in air which enters our lungs.
 Our lungs absorb the oxygen into the blood and the blood transports the oxygen to the legs.

Answers | Edit | Duplicate | Used In | Reorder

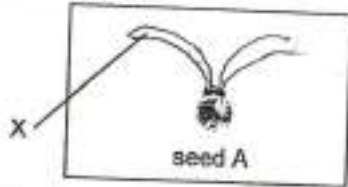
Remove From Test

Question 42

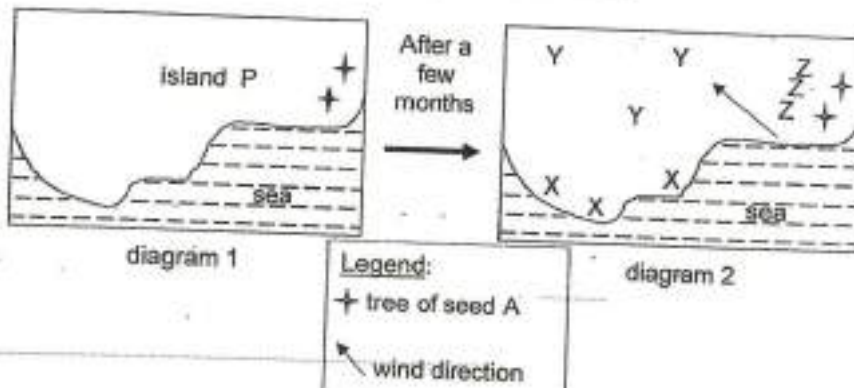
Primary 5 Science » Primary 5 Science (Term 2)

0 pts

Observe the seed shown below.



Part X of the seed helps the seed to stay in the air for a longer time.
 The tree of seed A is commonly found on an island, P. Diagram 1 below shows part of island P where the trees of seed A can be found.



Explain your answer for previous question. (2 marks)

This question is designed for extended answers that parent/ teacher will have to assign and guide child to attempt after the test has been completed.

Grading: This question type is not graded on this system and will not affect the final score as it was designed in such a way that it requires manual assistance.

Question Type: Essay
Date Added: Thu 5th Aug 2021
Last Modified: N/A
QID#: 28,628,258

Correctly answered feedback

Seed A has a wing-like structure to help it to be dispersed further away (from its parent plant) by wind.

Incorrectly answered feedback

Seed A has a wing-like structure to help it to be dispersed further away (from its parent plant) by wind.

Answers | Edit | Duplicate | Used In | Reorder

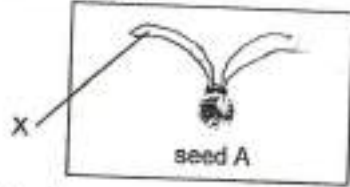
Remove From Test

Question 43

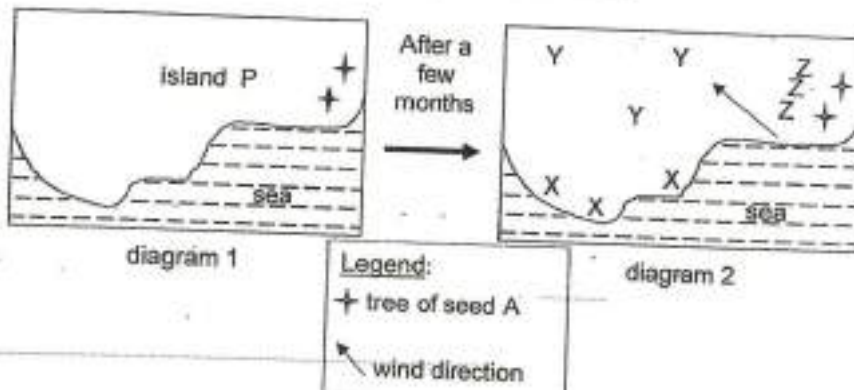
Primary 5 Science » Primary 5 Science (Term 2)

1 pt

Observe the seed shown below.



Part X of the seed helps the seed to stay in the air for a longer time. The tree of seed A is commonly found on an island, P. Diagram 1 below shows part of island P where the trees of seed A can be found.



Predict where the seedlings of seed A would most likely be found on this part of the island after a few months. Fill in the blank below with the letter 'X', 'Y' or 'Z'.

The seedlings of seed A would most likely be found at _____.

Accepted answers:

- ✓ Y
- ✓ Letter y

Question Type: Free Text
 Date Added: Thu 5th Aug 2021
 Last Modified: N/A
 QID#: 28,628,269

Answers | Edit | Duplicate | Used In | Reorder

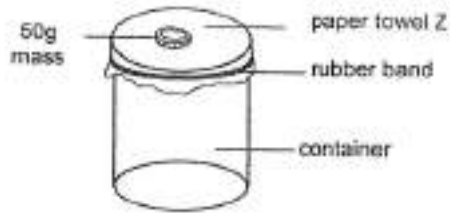
Remove From Test

Question 44

Primary 5 Science » Primary 5 Science (Term 2)

0 pts

Roland placed a piece of paper towel, Z, over the mouth of a container using a rubber band as shown in the diagram below. The paper towel served as the cover of the container.



He added 50g mass on the paper towel, one at a time, until the paper towel tore. He then repeated the experiment with another two different types of paper towels, X and Y. The table below shows his results.

| Type of paper towel | Number of 50g mass placed before the paper towel tore |
|---------------------|---|
| X | 1 |
| Y | 5 |
| Z | 3 |

Based on the table, what can he conclude about paper towel X and Z? (1 mark)

This question is designed for extended answers that parent/ teacher will have to assign and guide child to attempt after the test has been completed.

Grading: This question type is not graded on this system and will not affect the final score as it was designed in such a way that it requires manual assistance.

Question Type: Essay
Date Added: Thu 5th Aug 2021
Last Modified: N/A
QID#: 28,628,257

Correctly answered feedback

Paper towel X is weaker than paper towel Z.

Incorrectly answered feedback

Paper towel X is weaker than paper towel Z.

[Answers](#) | [Edit](#) | [Duplicate](#) | [Used In](#) | [Reorder](#)

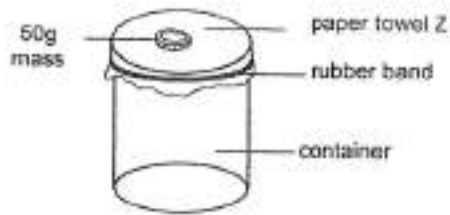
[Remove From Test](#)

Question 45

Primary 5 Science » Primary 5 Science (Term 2)

1 pt

Roland placed a piece of paper towel, Z, over the mouth of a container using a rubber band as shown in the diagram below. The paper towel served as the cover of the container.



He added 50g mass on the paper towel, one at a time, until the paper towel tore. He then repeated the experiment with another two different types of paper towels, X and Y. The table below shows his results.

| Type of paper towel | Number of 50g mass placed before the paper towel tore |
|---------------------|---|
| X | 1 |
| Y | 5 |
| Z | 3 |

Which paper towel, X, Y or Z is the strongest? Give a reason for your answer.

Accepted answers:

✓ Y

✓ Paper towel Y

Question Type: Free Text
Date Added: Thu 5th Aug 2021
Last Modified: N/A
QID#: 28,628,272

Correctly answered feedback

Paper towel Y is the strongest. It holds the most number of 50g mass than X and Z.

Incorrectly answered feedback

Paper towel Y is the strongest. It holds the most number of 50g mass than X and Z.

[Answers](#) | [Edit](#) | [Duplicate](#) | [Used In](#) | [Reorder](#)

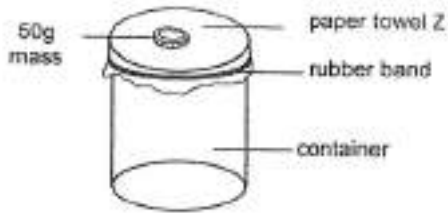
[Remove From Test](#)

Question 46

Primary 5 Science » Primary 5 Science (Term 2)

0 pts

Roland placed a piece of paper towel, Z, over the mouth of a container using a rubber band as shown in the diagram below. The paper towel served as the cover of the container.



He added 50g mass on the paper towel, one at a time, until the paper towel tore. He then repeated the experiment with another two different types of paper towels, X and Y. The table below shows his results.

| Type of paper towel | Number of 50g mass placed before the paper towel tore |
|---------------------|---|
| X | 1 |
| Y | 5 |
| Z | 3 |

Roland repeated his experiment three times. Explain why. (1 mark)

This question is designed for extended answers that parent/ teacher will have to assign and guide child to attempt after the test has been completed.

Grading: This question type is not graded on this system and will not affect the final score as it was designed in such a way that it requires manual assistance.

Question Type: Essay
Date Added: Thu 5th Aug 2021
Last Modified: N/A
QID#: 28,628,259

Correctly answered feedback

To ensure that the results of the experiment is accurate and reliable.

Incorrectly answered feedback

To ensure that the results of the experiment is accurate and reliable.

[Answers](#) | [Edit](#) | [Duplicate](#) | [Used In](#) | [Reorder](#)

[Remove From Test](#)

Question 47

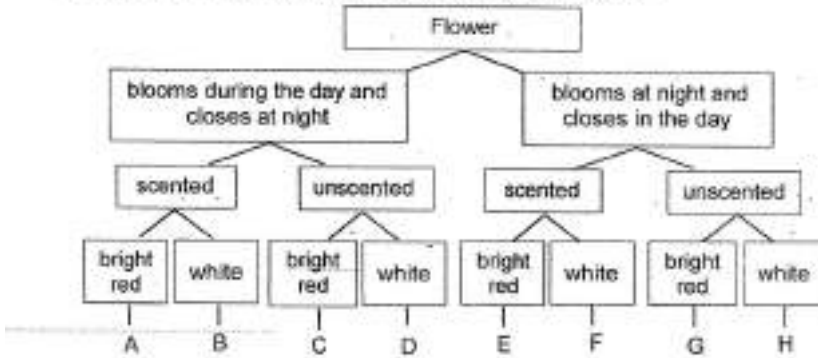
Primary 5 Science » Primary 5 Science (Term 2)

0 pts

Animal X helps in the pollination of flowers. The table below shows some information about this animal.

| |
|-------------------------------|
| Animal X |
| attracted to scented flowers. |
| likes white flowers |
| only active at night |

There are many flowering plants in a garden. The characteristics of the flowers of these plants are shown in the classification chart below.



Explain your answer for previous question. (1 mark)

This question is designed for extended answers that parent/ teacher will have to assign and guide child to attempt after the test has been completed.

Grading: This question type is not graded on this system and will not affect the final score as it was designed in such a way that it requires manual assistance.

Question Type: Essay
 Date Added: Thu 5th Aug 2021
 Last Modified: N/A
 QID#: 28,628,260

Correctly answered feedback

Flower F is white, scented and it blooms at night.

Incorrectly answered feedback

Flower F is white, scented and it blooms at night.

Answers | Edit | Duplicate | Used In | Reorder

Remove From Test

Question 48

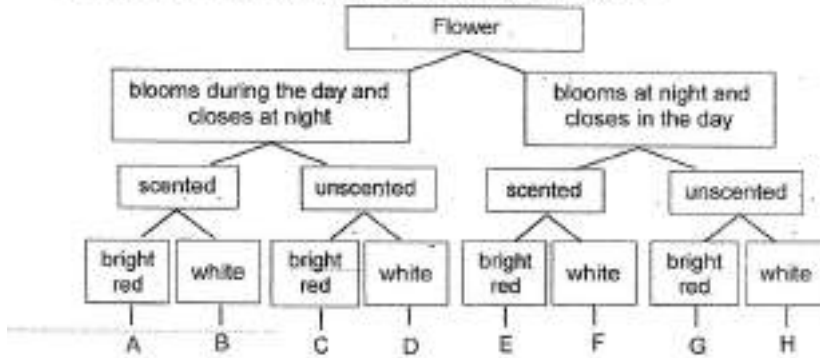
Primary 5 Science » Primary 5 Science (Term 2)

0 pts

Animal X helps in the pollination of flowers. The table below shows some information about this animal.

| |
|-------------------------------|
| Animal X |
| attracted to scented flowers. |
| likes white flowers |
| only active at night |

There are many flowering plants in a garden. The characteristics of the flowers of these plants are shown in the classification chart below.



The insect below collects nectar and is often seen flying around the flowers of plant A (refer to the chart above).



Name one other characteristic not stated in the flow chart that the flower of plant A most likely has to attract the insect to help pollinate the flower. (1m)

This question is designed for extended answers that parent/ teacher will have to assign and guide child to attempt after the test has been completed.

Grading: This question type is not graded on this system and will not affect the final score as it was designed in such a way that it requires manual assistance.

Question Type: Essay
 Date Added: Thu 5th Aug 2021
 Last Modified: N/A
 QID#: 28,628,263

Correctly answered feedback

Has big petals/sticky pollen grains/sticky stigma/nectar.

Incorrectly answered feedback

Has big petals/sticky pollen grains/sticky stigma/nectar.

[Answers](#) |
 [Edit](#) |
 [Duplicate](#) |
 [Used In](#) |
 [Reorder](#)

[Remove From Test](#)

Question 49

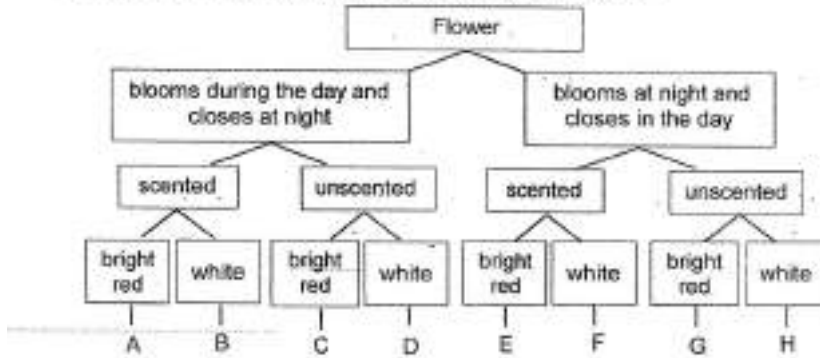
Primary 5 Science » Primary 5 Science (Term 2)

1 pt

Animal X helps in the pollination of flowers. The table below shows some information about this animal.

| Animal X |
|-------------------------------|
| attracted to scented flowers. |
| likes white flowers |
| only active at night |

There are many flowering plants in a garden. The characteristics of the flowers of these plants are shown in the classification chart below.



Which flowering plant (A, B, C, D, E, F, G or H) is most likely pollinated by animal X?

Accepted answers:

- ✓ F
- ✓ Plant f
- ✓ Flowering plant F

Question Type: Free Text
 Date Added: Thu 5th Aug 2021
 Last Modified: N/A
 QID#: 28,628,273

[Answers](#) | [Edit](#) | [Duplicate](#) | [Used In](#) | [Reorder](#)

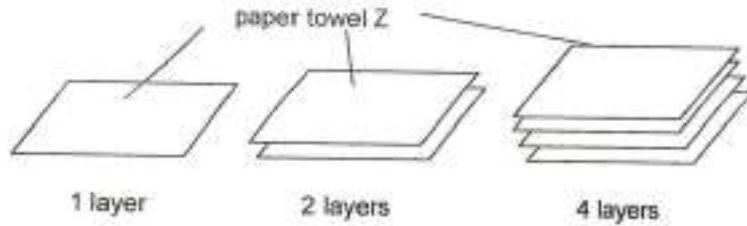
[Remove From Test](#)

Question 50

Primary 5 Science » Primary 5 Science (Term 2)

0 pts

Roland repeated the experiment using different number of layers of paper towel Z as the cover of the container as shown in the diagram below.



His results are shown in the table below.

| Number of layers of paper towel Z | Number of 50g mass placed before the paper towel tore |
|-----------------------------------|---|
| 1 | 3 |
| 2 | 7 |
| 4 | 14 |

What is the relationship between the strength of the cover and the number of layers of paper towel Z used? (1 mark)

This question is designed for extended answers that parent/ teacher will have to assign and guide child to attempt after the test has been completed.

Grading: This question type is not graded on this system and will not affect the final score as it was designed in such a way that it requires manual assistance.

Question Type: Essay
Date Added: Thu 5th Aug 2021
Last Modified: N/A
QID#: 28,628,261

Correctly answered feedback

The more number of paper towels, the stronger the cover is.

Incorrectly answered feedback

The more number of paper towels, the stronger the cover is.

[Answers](#) | [Edit](#) | [Duplicate](#) | [Used In](#) | [Reorder](#)

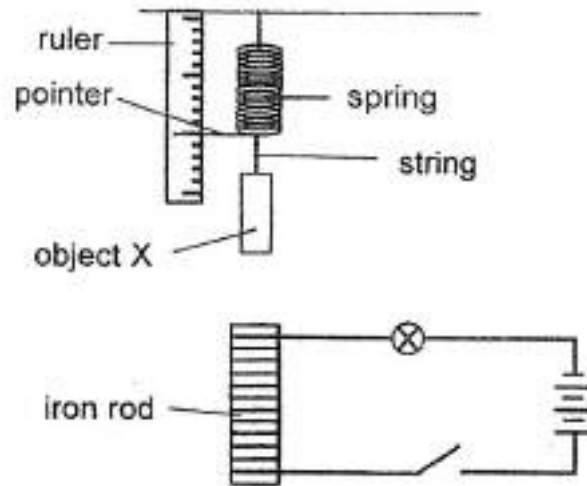
[Remove From Test](#)

Question 51

Primary 5 Science » Primary 5 Science (Term 2)

0 pts

Bernard prepared the set-up shown.



The pointer moved downwards when the switch was closed. Explain why.
(2 marks)

This question is designed for extended answers that parent/ teacher will have to assign and guide child to attempt after the test has been completed.

Grading: This question type is not graded on this system and will not affect the final score as it was designed in such a way that it requires manual assistance.

Question Type: Essay
Date Added: Thu 5th Aug 2021
Last Modified: N/A
QID#: 28,628,256

Correctly answered feedback

When the switch was closed, a closed circuit was formed. The iron rod became an electromagnet to attract object X and pull the pointer forwards.

Incorrectly answered feedback

When the switch was closed, a closed circuit was formed. The iron rod became an electromagnet to attract object X and pull the pointer forwards.

[Answers](#) | [Edit](#) | [Duplicate](#) | [Used In](#) | [Reorder](#)

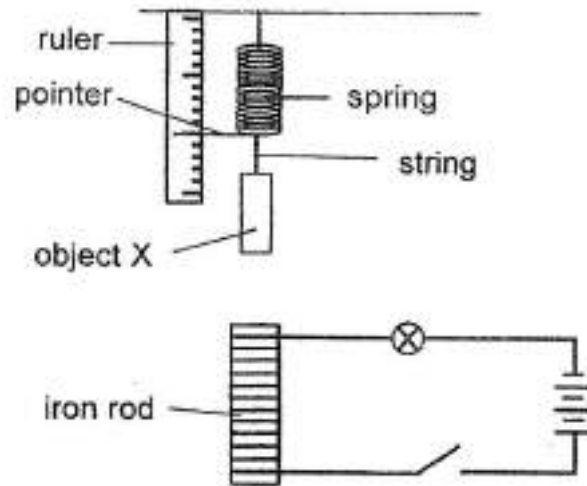
[Remove From Test](#)

Question 52

Primary 5 Science » Primary 5 Science (Term 2)

1 pt

Bernard prepared the set-up shown.



Give an example of the material used to make object X.

Example of material: _____

Accepted answers:

- ✓ Steel
- ✓ Iron
- ✓ Nickel
- ✓ cobalt

Question Type: Free Text
Date Added: Thu 5th Aug 2021
Last Modified: N/A
QID#: 28,628,274

Correctly answered feedback

Steel / Iron/ Nickel/ Cobalt

Incorrectly answered feedback

Steel / Iron/ Nickel/ Cobalt

[Answers](#) |
 [Edit](#) |
 [Duplicate](#) |
 [Used In](#) |
 [Reorder](#)

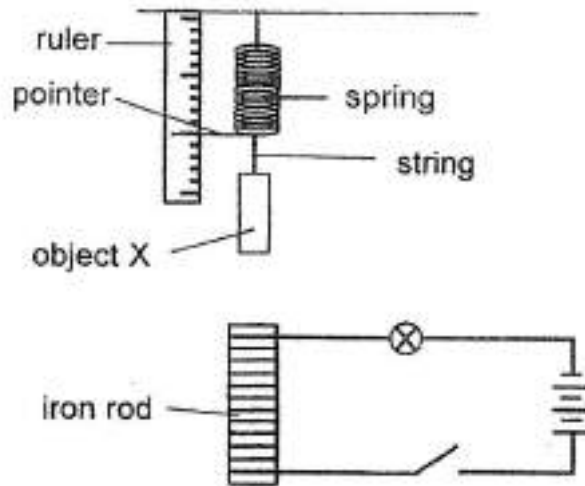
[Remove From Test](#)

Question 53

Primary 5 Science » Primary 5 Science (Term 2)

1 pt

Bernard prepared the set-up shown.



For the set-up to work, state the property of the material used to make object X.

Property of material: _____

Accepted answers:

✓ Magnetic material

Question Type: Free Text
Date Added: Thu 5th Aug 2021
Last Modified: N/A
QID#: 28,628,271

[Answers](#) | [Edit](#) | [Duplicate](#) | [Used In](#) | [Reorder](#)

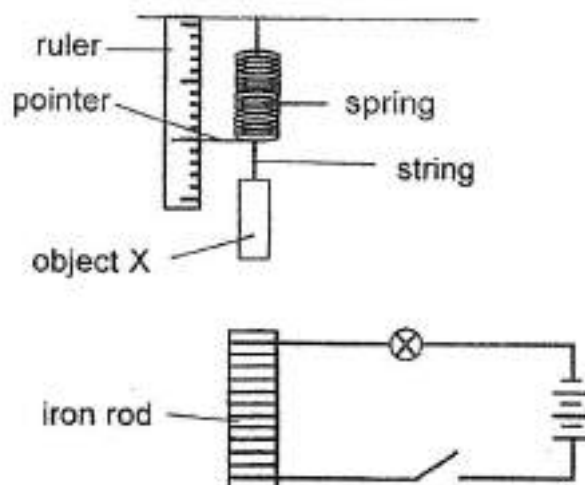
[Remove From Test](#)

Question 54

Primary 5 Science » Primary 5 Science (Term 2)

0 pts

Bernard prepared the set-up shown.



Would the pointer move downwards more or less when one battery was removed from the circuit and the switch closed? (1 mark)

This question is designed for extended answers that parent/ teacher will have to assign and guide child to attempt after the test has been completed.

Grading: This question type is not graded on this system and will not affect the final score as it was designed in such a way that it requires manual assistance.

Question Type: Essay
Date Added: Thu 5th Aug 2021
Last Modified: N/A
QID#: 28,628,262

Correctly answered feedback

The pointer move downwards less.

Incorrectly answered feedback

The pointer move downwards less.

[Answers](#) | [Edit](#) | [Duplicate](#) | [Used In](#) | [Reorder](#)

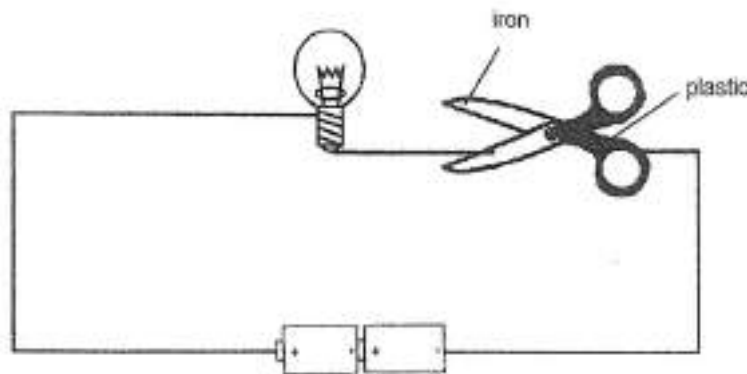
[Remove From Test](#)

Question 55

Primary 5 Science » Primary 5 Science (Term 2)

0 pts

Norah sets up a circuit as shown. The bulb and batteries are in working condition.



Will the bulb light up? Explain why. (2m)

This question is designed for extended answers that parent/ teacher will have to assign and guide child to attempt after the test has been completed.

Grading: This question type is not graded on this system and will not affect the final score as it was designed in such a way that it requires manual assistance.

Question Type: Essay
Date Added: Thu 5th Aug 2021
Last Modified: N/A
QID#: 28,628,264

Correctly answered feedback

No, the bulb will not light up. Plastic is an insulator and will not allow electricity to flow through it.

Incorrectly answered feedback

No, the bulb will not light up. Plastic is an insulator and will not allow electricity to flow through it.

[Answers](#) | [Edit](#) | [Duplicate](#) | [Used In](#) | [Reorder](#)

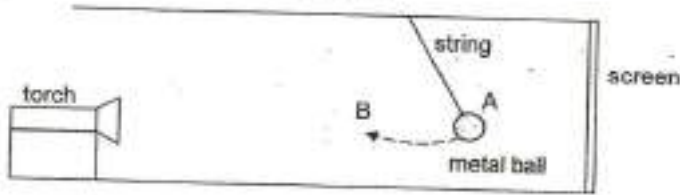
[Remove From Test](#)

Question 56

Primary 5 Science » Primary 5 Science (Term 2)

0 pts

Zhi Lun conducted another experiment in a dark room using the set-up below. He hung a metal ball and let it swing freely in front of a torch. At position A, he observed that a shadow had formed on the screen.



How would the size of the shadow on the screen change as the metal ball swings from position A to B? (1m)

This question is designed for extended answers that parent/ teacher will have to assign and guide child to attempt after the test has been completed.

Grading: This question type is not graded on this system and will not affect the final score as it was designed in such a way that it requires manual assistance.

Question Type: Essay
Date Added: Thu 5th Aug 2021
Last Modified: N/A
QID#: 28,628,267

Correctly answered feedback

The size of the shadow increases.

Incorrectly answered feedback

The size of the shadow increases.

[Answers](#) | [Edit](#) | [Duplicate](#) | [Used In](#) | [Reorder](#)

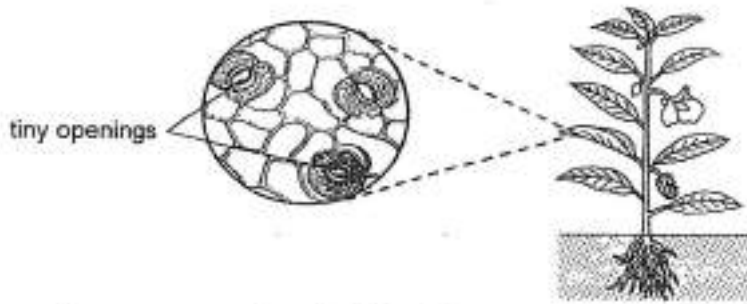
[Remove From Test](#)

Question 57

Primary 5 Science » Primary 5 Science (Term 2)

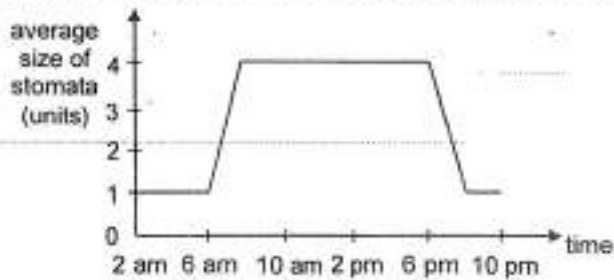
1 pt

There are many tiny openings called stomata on the underside of leaves.



Gases such as oxygen, carbon dioxide and water vapour move through the stomata.

Roslan measured the changes in the size of the stomata of a plant in his garden at different times of the day. He plotted his results in a graph as shown below.



Based on the graph, were the tiny openings bigger or smaller during the day than night? (1 mark)

Accepted answers:

✓ Bigger

Question Type: Free Text
 Date Added: Thu 5th Aug 2021
 Last Modified: N/A
 QID#: 28,628,277

[Answers](#) | [Edit](#) | [Duplicate](#) | [Used In](#) | [Reorder](#)

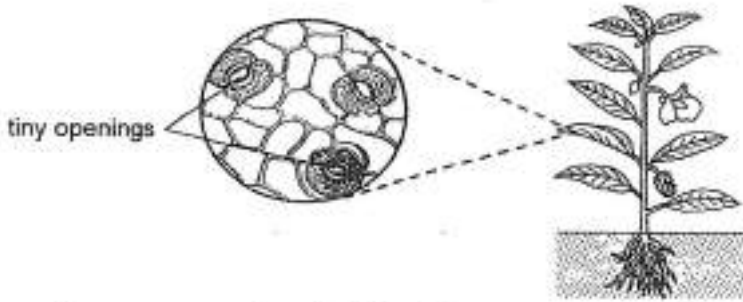
[Remove From Test](#)

Question 58

Primary 5 Science » Primary 5 Science (Term 2)

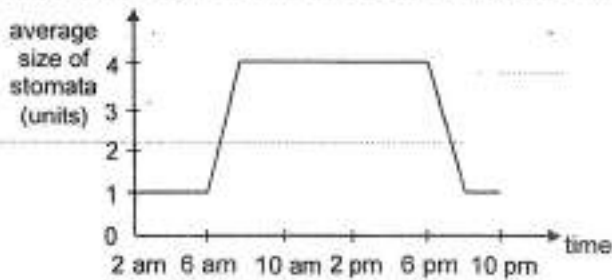
0 pts

There are many tiny openings called stomata on the underside of leaves.



Gases such as oxygen, carbon dioxide and water vapour move through the stomata.

Roslan measured the changes in the size of the stomata of a plant in his garden at different times of the day. He plotted his results in a graph as shown below.



The change in size of the stomata in the previous question during the day can also be a disadvantage to the plant. What is this disadvantage? (1 mark)

This question is designed for extended answers that parent/ teacher will have to assign and guide child to attempt after the test has been completed.

Grading: This question type is not graded on this system and will not affect the final score as it was designed in such a way that it requires manual assistance.

Question Type: Essay
Date Added: Thu 5th Aug 2021
Last Modified: N/A
QID#: 28,628,246

Correctly answered feedback

The plant will lose more water through the stomata.

Incorrectly answered feedback

The plant will lose more water through the stomata.

[Answers](#) | [Edit](#) | [Duplicate](#) | [Used In](#) | [Reorder](#)

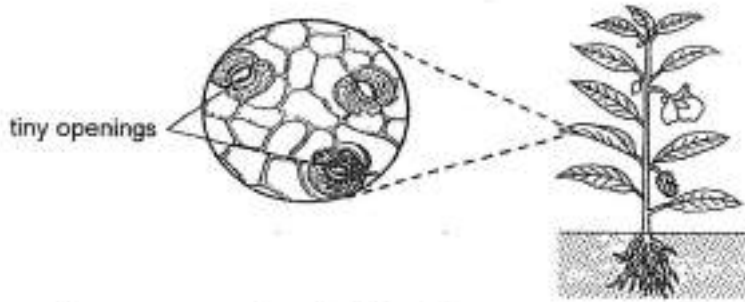
[Remove From Test](#)

Question 59

Primary 5 Science » Primary 5 Science (Term 2)

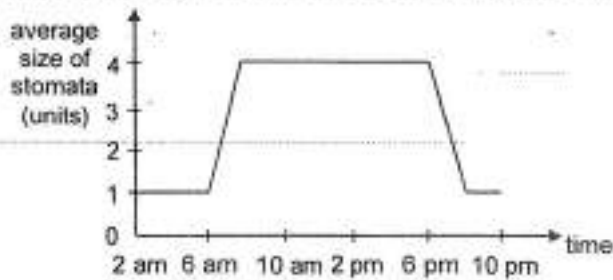
1 pt

There are many tiny openings called stomata on the underside of leaves.

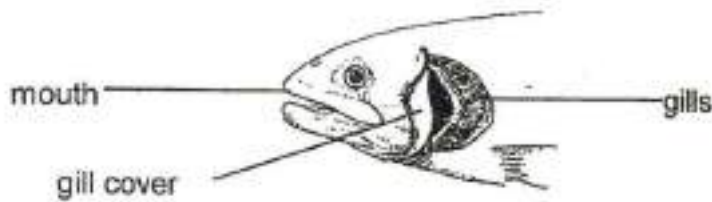


Gases such as oxygen, carbon dioxide and water vapour move through the stomata.

Roslan measured the changes in the size of the stomata of a plant in his garden at different times of the day. He plotted his results in a graph as shown below.



The diagram below shows the head of a fish.



Which part of the fish has a similar function as the tiny openings found on the underside of the leaf?

Accepted answers:

- ✓ the gills
- ✓ Gills

Question Type: Free Text
 Date Added: Thu 5th Aug 2021
 Last Modified: N/A
 QID#: 28,628,268

[Answers](#) |
 [Edit](#) |
 [Duplicate](#) |
 [Used In](#) |
 [Reorder](#)

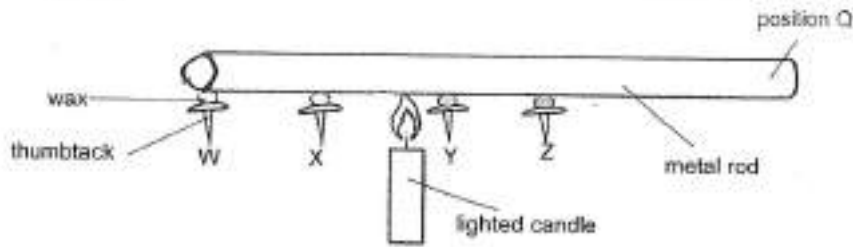
[Remove From Test](#)

Question 60

Primary 5 Science » Primary 5 Science (Term 2)

0 pts

Sally set up an experiment as shown. She placed a lighted candle below the metal rod. She used the same amount of wax to hold all the thumbtacks W, X, Y and Z to the rod.



Sally repeated the experiment by replacing the metal rod with a glass rod.

What will she observe about the time needed for all the wax to melt when the glass rod is used as compared to the metal rod? (1 mark)

This question is designed for extended answers that parent/ teacher will have to assign and guide child to attempt after the test has been completed.

Grading: This question type is not graded on this system and will not affect the final score as it was designed in such a way that it requires manual assistance.

Question Type: Essay
Date Added: Thu 5th Aug 2021
Last Modified: N/A
QID#: 28,628,247

Correctly answered feedback

The time needed is more longer.

Incorrectly answered feedback

The time needed is more longer.

[Answers](#) | [Edit](#) | [Duplicate](#) | [Used In](#) | [Reorder](#)

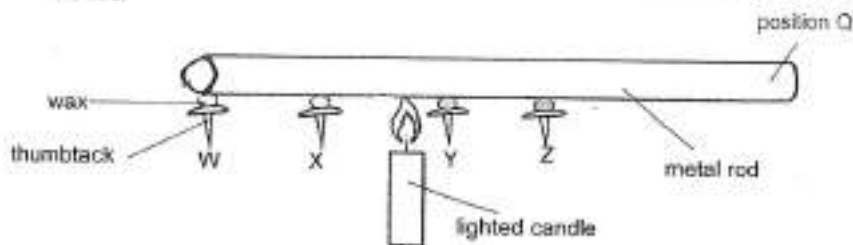
[Remove From Test](#)

Question 61

Primary 5 Science » Primary 5 Science (Term 2)

1 pt

Sally set up an experiment as shown. She placed a lighted candle below the metal rod. She used the same amount of wax to hold all the thumbtacks W, X, Y and Z to the rod.



Which thumbtack will drop first form the metal rod?

Accepted answers:

✓ Y

✓ thumbtack y

Question Type: Free Text
Date Added: Thu 5th Aug 2021
Last Modified: N/A
QID#: 28,628,278

[Answers](#) | [Edit](#) | [Duplicate](#) | [Used In](#) | [Reorder](#)

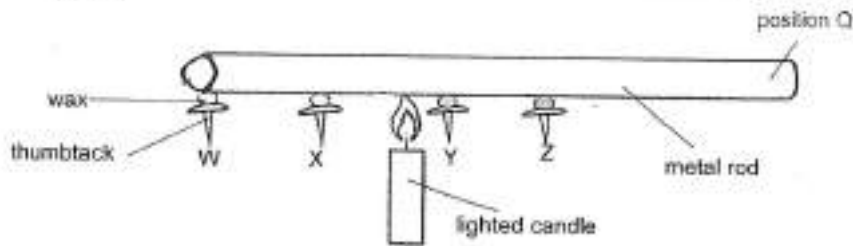
[Remove From Test](#)

Question 62

Primary 5 Science » Primary 5 Science (Term 2)

0 pts

Sally set up an experiment as shown. She placed a lighted candle below the metal rod. She used the same amount of wax to hold all the thumbtacks W, X, Y and Z to the rod.



The experiment was repeated with thumbtack Z pasted at position Q of the metal rod and the remaining thumbtacks at their original positions.

Sally observed that the wax on thumbtack Z took the longest time to melt. Why was this so? (1 mark)

This question is designed for extended answers that parent/ teacher will have to assign and guide child to attempt after the test has been completed.

Grading: This question type is not graded on this system and will not affect the final score as it was designed in such a way that it requires manual assistance.

Question Type: Essay
Date Added: Thu 5th Aug 2021
Last Modified: N/A
QID#: 28,628,250

Correctly answered feedback

Heat flows through the longer distance to reach Z to melt the wax.

Incorrectly answered feedback

Heat flows through the longer distance to reach Z to melt the wax.

[Answers](#) | [Edit](#) | [Duplicate](#) | [Used In](#) | [Reorder](#)

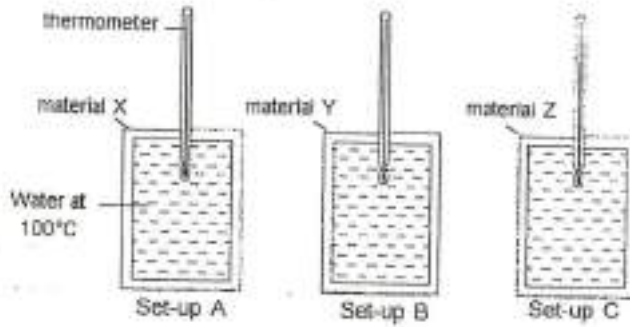
[Remove From Test](#)

Question 63

Primary 5 Science » Primary 5 Science (Term 2)

2 pts

Sally conducted another experiment using three set-ups as shown below. The container for each set-up was covered with different material, X, Y or Z. Each container was filled with the same amount of hot water at 100°C.



Sally measured the temperature of the water in each container at different times and recorded them in the table below.

| Time (min) | Temperature of water (°C) | | |
|------------|---------------------------|----------|----------|
| | Set-up A | Set-up B | Set-up C |
| 0 | 100 | 100 | 100 |
| 15 | 88 | 80 | 90 |
| 30 | 77 | 55 | 75 |

In which set-up will the water reach room temperature first? Explain why. (2m)

Accepted answers:

- ✓ Set-up B.
- ✓ setup B.
- ✓ Set up B
- ✓ Set - up B
- ✓ Set-Up B
- ✓ B
- ✓ setup b

Question Type: Free Text
 Date Added: Thu 5th Aug 2021
 Last Modified: N/A
 QID#: 28,628,270

Correctly answered feedback

Set-up B. The temperature of the water was the lowest which shows that Y is the best conductor of heat. Y conducts heat the fastest from the water to the surroundings.

Incorrectly answered feedback

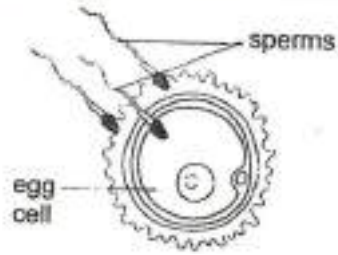
Set-up B. The temperature of the water was the lowest which shows that Y is the best conductor of heat. Y conducts heat the fastest from the water to the surroundings.

Question 64

Primary 5 Science » Primary 5 Science (Term 2)

0.5 pts

The diagram below shows the process of fertilisation in human reproduction.



Name the parts in the reproductive system of a flowering plant that are similar to the sperms.

Sperms: _____

Accepted answers:

✓ pollen grains

Question Type: Free Text
Date Added: Thu 5th Aug 2021
Last Modified: N/A
QID#: 28,628,275

[Answers](#) | [Edit](#) | [Duplicate](#) | [Used In](#) | [Reorder](#)

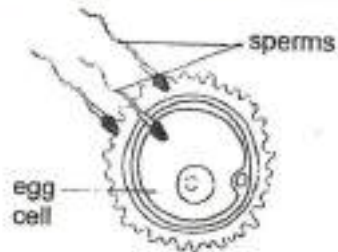
[Remove From Test](#)

Question 65

Primary 5 Science » Primary 5 Science (Term 2)

0.5 pts

The diagram below shows the process of fertilisation in human reproduction.



Name the parts in the reproductive system of a flowering plant that are similar to the egg cell.

Egg cell: _____

Accepted answers:

✓ ovules

Question Type: Free Text
Date Added: Thu 5th Aug 2021
Last Modified: N/A
QID#: 28,628,276

[Answers](#) | [Edit](#) | [Duplicate](#) | [Used In](#) | [Reorder](#)

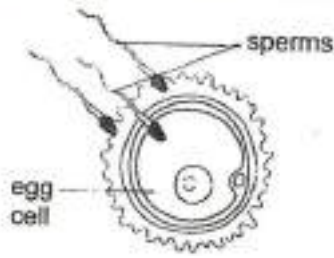
[Remove From Test](#)

Question 66

Primary 5 Science » Primary 5 Science (Term 2)

0 pts

The diagram below shows the process of fertilisation in human reproduction.



Study the table below which shows one difference and one similarity in the sexual reproduction of flowering plants and humans.

| Sexual Reproduction of Flowering Plants and Humans | | |
|---|--|-------|
| Similarity | Difference | |
| | Plant | Human |
| In both plant and human reproduction, fertilisation occurs when a male reproductive cell fuses with a female reproductive cell. | The female reproductive cell remains in the ovary. | ? |

What is the missing information about the human female reproductive cell in the table? Write your answer below. (1m)

This question is designed for extended answers that parent/ teacher will have to assign and guide child to attempt after the test has been completed.

Grading: This question type is not graded on this system and will not affect the final score as it was designed in such a way that it requires manual assistance.

Question Type: Essay
 Date Added: Thu 5th Aug 2021
 Last Modified: N/A
 QID#: 28,628,266

Correctly answered feedback

The female reproductive cell is outside the ovary.

Incorrectly answered feedback

The female reproductive cell is outside the ovary.

[Answers](#) |
 [Edit](#) |
 [Duplicate](#) |
 [Used In](#) |
 [Reorder](#)

[Remove From Test](#)